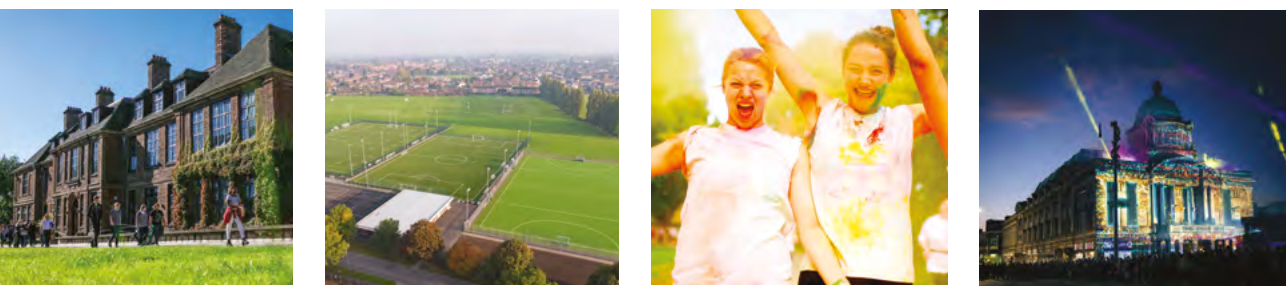




UNIVERSITY
OF HULL

INTERNATIONAL POSTGRADUATE PROSPECTUS 2019





This is Hull

Thank you for your interest in studying at the University of Hull.
 We offer the kind of traditional red-brick university experience that Britain is famous for, together with a supportive, modern, high-tech environment designed to help all of our students achieve their ambitions. We're especially proud to welcome a large number of international postgraduate students to our campus every year, attracted by our academic strength, the career success of our alumni, and the friendliness and affordability of our city.



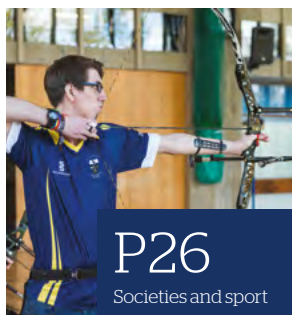


P12

Hull and the region

Contents

The University of Hull is a great place to be a postgraduate student, offering you academic quality, fantastic facilities, career-enhancing opportunities and a vibrant social life - all on one of the most attractive, friendly and affordable single campus locations in the country.



P26

Societies and sport

Reasons to choose Hull 6

Facts and figures 8

What our students say 10

Hull and the region 12

Our academic power 14

Ninety years of success 16

Your career and future 18

Campus life 20

Our campus facilities 22

Your student union 24

Societies and sport 26

Supporting your experience 28

Supporting your studies 30



P32

Accommodation

Your accommodation 32

Tuition fees 36

Cost of living 37

Courses 38

Entry requirements & how to apply 108

Our campus 110

How to get to the University 112

Useful contacts 114



P38

Courses



Reasons to choose Hull

It's 90 years since we first opened our huge oak doors to our students. As one of the oldest universities in the country, we've earned our reputation as a source of award-winning research and fresh new talent.

We know that choosing somewhere to pursue your postgraduate studies is a life-shaping decision. That's especially true for our international students, who are moving further away from home. At the University of Hull, we believe that we have the perfect combination of heritage and high technology, in an inspiring and nurturing arena, to help you truly flourish.

Here are six great reasons to come here:

- 1 A postgraduate qualification from Hull opens up all sorts of opportunities:** 97.9% of our international students progress into work or further study within six months of completing their degree.*
- 2 We achieved a Silver Award in the Teaching Excellence Framework 2018** – a Government evaluation of learning and teaching. The assessment was particularly positive about our excellent outcomes; the proportion of students progressing to highly skilled employment; and the very high levels of student satisfaction.
- 3 We guarantee all unaccompanied new students a place in accommodation that's owned, managed or directed by the University** (as long as you apply by the deadline of 1 September).
- 4 We're part-way through a £200-million programme of investment in our campus.** New developments include an award-winning library, a state-of-the-art medical building, a world-class concert hall, fantastic new sporting facilities and on-campus accommodation for more than 2,000 students.
- 5 Everywhere you look, you will see our commitment to your future** with free high-speed WiFi, state-of-the-art labs and professional-quality performance spaces, among our traditional ivy-draped buildings.
- 6 New international students paying standard tuition fees at Hull receive a discount of up to £3,500 per year[‡].** Hull is also among the best value cities in Britain. We're number one for low cost student housing, according to Student.com's 2017 Global Student Accommodation Indicator.

* Destinations of Leavers from Higher Education survey, for the academic year 2016/17 published by the Higher Education Statistics Agency 2018

[‡] This includes £1,000 extra for students from low and lower middle income countries as defined by the World Bank. See www.hull.ac.uk/money for details.



Facts & Figures

97.9%



of our international students go into work or further study within six months of graduating*

*Destinations of Leavers from Higher Education survey, for the academic year 2016/17 published by the Higher Education Statistics Agency 2018

#1

city in the UK for low-cost student housing.**

**Student.com 2017

~1,300

international students on our friendly, culturally diverse campus.

top 50

institution for research power.§

§Research Excellence Framework 2014

The number of different nations represented within our vibrant student community is

~100

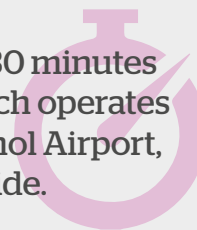
£200 million



of on-going investment in our campus facilities and services, including new accommodation, our refurbished library, a world-class concert hall, a new health campus and improved sports facilities.

2.5

hours by train to London and only 30 minutes by road to Humberside Airport which operates regular flights to Amsterdam Schiphol Airport, linking to 800 destinations worldwide.



14th



oldest university in England, offering an education with the kind of history, heritage and quality for which the country is world-famous.

What our **students say**



Penpitcha Wongtoythong
MSc Marketing Management
Thailand

"Studying such a cutting-edge course, taught by specialists in the subject area, has really given me confidence and satisfaction. In some of my modules, I have even had the chance to work on real professional projects, which has given me skills for my future career."



Noorah Kazi
MSc Computer Science
India

"The University of Hull is very welcoming – especially the International Office staff and volunteers, who ensured we did not face any issues during our stay."



Bingni Deng
PhD Human Geography
China

"I chose to attend the University of Hull as the lecturers and supervisors are professional. The department has many events for its students and my supervisor is very professional and helpful. I have learnt a lot about my subject!"



Shi Yuen Wong
MEng Mechanical Engineering
Malaysia

"The lecturers are extremely passionate and are always ready to help. They have made my learning experience a memorable one."



Micaíl Pappas
MSc Finance and Investment
Greece

"I feel very lucky that I came to Hull because I had the opportunity to explore a nice city with very friendly citizens. My university experience in one word? 'Incredible.'"



Huan Hoang-Cong
PhD Finance
Vietnam

"The University of Hull has many excellent lecturers in my area of research, which was one of the many reasons I decided to pursue a PhD here. The University has allowed me to develop my teaching skills but also learn more modern study and teaching methods that I can use in the future."

Hull and the region

Hull is a dynamic city with a reputation for friendliness and affordability, surrounded by a region full of heritage, history and beauty. It is the ideal place to spend your postgraduate years.

Humber Street © Thomas Arran



The Deep © Thomas Arran



A friendly city to live in

One of the great advantages of Hull is that it is much more friendly and affordable than bigger cities. It's a place where everyone is made to feel welcome.

The city centre has something for everyone. The impressive £200-million St Stephen's development in the heart of the city is a shopper's paradise, housing many of the most popular high-street brands. Savile Street has designer clothing stores and the Hepworth's Arcade supplies an eclectic mix of small, independent and unusual shops. The Old Town is also a must-visit area, with its welcoming cafés, traditional pubs and award-winning Museums Quarter.

The student district is an excellent place to study and to socialise, whether sipping a cappuccino at one of the stylish pavement café-bars on Princes Avenue, shopping on Newland Avenue or relaxing in Pearson Park.

Together with new friends, students can visit a variety of clubs that cater for different musical tastes, a choice of four multiplex cinemas and the nationally renowned Hull Truck Theatre.

A scenic region to explore

The surrounding area is made up of a mixture of busy cities, green countryside, pretty villages, grand stately homes and charming market towns - including Beverley, with its cobbled streets and magnificent Gothic Minster. Along the coast are award-winning seaside resorts, such as Bridlington, Hornsea and Withernsea, all of which have sandy beaches and pleasant promenades.

The East Riding of Yorkshire and North Yorkshire have some of Britain's most beautiful scenery. The region's open grasslands, wild coastline, gentle hills and stunning dales provide an unspoilt and timeless landscape.

Hull also has efficient transport links (see page 112), putting cities such as York, Leeds and Manchester within easy reach, as well as being a perfect base for exploring the rest of the UK, including London and Edinburgh, and mainland Europe.

Our academic power

Our research has changed the world. And that's no exaggeration. We've been named a top 50 institution for research power* and the impact of our work can be felt in people's day-to-day lives globally.

Revolutionary research conducted here led to the development of liquid crystal display (LCD) screens used in TVs, laptops, phones and tablets.

We also worked on the groundbreaking technology behind bone density scanners (used to detect osteoporosis) and 'lab-on-a-chip' microdevice technology – made possible by the ingenuity and passion of our world-leading experts. The same sort of experts who'll be passing on their knowledge to you.

Research that benefits everyone

We believe that identifying and solving some of the world's most pressing problems are central to a university's function. Our current research portfolio spans everything from health to habitats, food to flooding and supply chains to slavery. Every piece of thought-provoking, game-changing work does great things for our reputation. And that's good for our students too. You can be sure that the same creative, challenging and world-leading thinking is informing your own studies.

*Research Excellence Framework 2014

Informing policy to shape the future

Our seven research institutes work tirelessly to find solutions to some of the biggest challenges facing the world today.

They bring together expertise from all corners of the University. Researchers work with partners and stakeholders to deliver research that benefits everyone and shapes and informs future policy.

Established in 2008, the **Logistics Institute** is now a world-renowned centre for research, education and expertise in logistics and supply chain management.

The **Maritime and Marine Institute** capitalises on Hull's unique combination of physical location, maritime history and marine resources.

Our **Culture, Place and Policy Institute** stimulates research on cultural activities, cultural policy and culture-led urban and regional development across the University.

The **Wilberforce Institute** is one of the world's leading research centres working towards the end of labour exploitation and slavery.

The **Risk Institute** is a focus for world-leading risk research and consultancy. It works with major bodies including the Ministry of Defence and the Project Management Institute.

The **Energy and Environment Institute** addresses global challenges surrounding climate change and its potentially devastating consequences.

The **Institute for Clinical and Applied Health Research** brings together expertise to build on our existing success in globally-significant applied healthcare research.

Training and development

We offer a supportive and vibrant postgraduate research community where you will benefit from training and development to supplement your subject-specific study.

As well as our Postgraduate Training Scheme, we offer drop-in sessions, workshops, master classes, webinars and much more to support and enhance your learning.

Postgraduate Training Scheme

In addition to your degree, students study on the Postgraduate Training Scheme. This helps you undertake research effectively, and gain transferable skills which can be used in your future career.

Skills development programme

Learn or top-up your skills in a variety of topics including academic writing, speed reading, conference presentations, research skills and more.

Support groups

Our Graduate School also offers informal opportunities to supplement your learning, including a skills development and social forum, drop-in support sessions and a writing support group.



TEF Silver

Awarded silver for our teaching excellence in 2018.*



The University was named in the **top 50** UK institutions for research power by the *Times Higher Education*, based on the most recent Research Excellence Framework 2014.

* The Teaching Excellence Framework recognizes excellence in teaching and learning in UK Universities and colleges



 Iheanyi benefited from our e-mentoring programme

"I participated as a mentee on the e-mentoring programme. The exercise was really helpful. The interaction with the mentor exposed me to the different options available in medical engineering. I still maintain contact with the mentor after the programme."

Iheanyi Osondu,
MSc Biomedical Engineering, Nigeria

Celebrating 90 years of **brighter research** and **brilliant teaching**

In 2018 we'll be marking 90 years of innovation and celebrating our contribution as a traditional red-brick university.

1928

His Royal Highness The Duke of York (the future King George VI) lays the foundation stone and University College Hull opens with 39 students.



1954

A Royal Charter is granted and the University of Hull becomes an independent institution with the right to award its own degrees.

DID YOU KNOW?

The University of Hull is the 14th-oldest university in England.

1957

Her Majesty The Queen makes her first official visit to the University.



1973

Professor George Gray makes the breakthrough which rendered liquid crystal display (LCD) technology commercially viable. The phone in your pocket, your screen on your desk and your LCD television all exist because of this groundbreaking discovery.

2018

The Queen officially opens the award-winning Allam Medical Building, the heart of the University of Hull's £28-million health campus.

2015

Our life-changing slavery research receives a royal seal of approval with the Queen's Anniversary Prize for its outstanding contribution towards tackling modern-day slavery. The University took a major role in shaping the UK's Modern Slavery Act, and is now working with one of the UK's largest supermarkets to identify and eliminate slavery from their supply chains both in the UK and overseas.

1997

Anthony Minghella, a former student and lecturer at the University, wins an Oscar for Best Director for the film *The English Patient*.



?

2019

This could be the start of your story at the University of Hull. What will you do? Come and help us write the next chapter.

2017

As a principal partner in Hull's year as the UK City of Culture in 2017, the University is proud to have been at the heart of the action as more than 60,000 people enjoyed a 365-day programme of world-class events and festivals that will continue to culturally enrich the region for many years to come.



2006

The University of Hull has two entries in a report showcasing the top 100 world-changing discoveries by British universities: the bone density scanner, and our globally renowned research into LCD technology.

2003

The Hull York Medical School opens to students, combining the strengths of the Universities of Hull and York. It was one of four medical schools founded in the UK, to meet the need to train more doctors.

DID YOU KNOW?

The acclaimed poet Philip Larkin was also the University's head librarian for 30 years.



Your career and future

A postgraduate degree from Hull could give you a head start on your career journey.

Well connected

Our relationships with industry, government, research bodies and other partners, mean you have the chance to benefit from placements, collaborations and real-world know-how that will make your CV and research work stand out.

Location, location, location

Our postgraduates can benefit from the multimillion-pound investment in the Humber area. The region is becoming known as the UK's 'energy estuary' because of its leading position in ports and logistics, petrochemicals and renewables. Our industry partners include Siemens, BP, ConocoPhillips, Smith & Nephew and RB.

Courses with a careers focus

We've woven elements of employability into our taught postgraduate courses to make sure everything you learn is relevant and transferable – and that you have the skills that employers really value.

Our Careers and Employability Service has been nationally recognised for its excellence. We organise an extensive programme of careers advice, fairs, CV workshops, mock interviews and assessment centres involving graduate recruiters.

Research skills

It is now widely recognised by employers, professional bodies and research funding agencies that specialist expertise alone is not sufficient preparation either for research or a subsequent career. With this in mind, the University of Hull requires all its postgraduate research students to follow a research training programme relating both to their particular field of study and to generic skills; for example, information technology and communication skills.

A life-long friend

Our relationship with you doesn't end when you leave. You'll have access to lifelong careers guidance. If you need direction on your professional path, or get to a point when you'd like a career change, we'll always be just a phone call or an email away.

We also have a new online platform, Hull Alumni Connects (hullalumniconnects.me) which puts our 85,000-strong global alumni network at your fingertips, helping you to make crucial connections and find career, internship and professional mentoring opportunities.

Learn to start your own business

If you are looking to carve out your own career path, the University's Enterprise and Entrepreneurship Society will help you develop your ideas, gain key business skills such as project management and marketing, and put you in contact with established entrepreneurs.

David's internship helped him become more confident

I chose MSc Business Management with internship to practice my learning before graduating, and to make me better equipped for the business world.

"The University of Hull provides the opportunity to develop and awaken lifelong skills. I've become more confident in delivering presentations and had the opportunity to meet some major players in the business world."

David Ovuakporie
MSc Business Management (with Internship), Nigeria

Campus life

Find your new home at the University of Hull.

Once you're on our compact and friendly campus, you'll never be more than a 10-minute walk from the things that make student life easier to organise and enjoy. You're also just a stone's throw from a thriving community, known as 'the Avenues'. The city centre is just a 20-minute bus ride too.

The University community

Situated just two miles north of the city centre, in the leafy, cosmopolitan residential suburb of Newland, the University's stunning campus is a top-quality learning and social space: well equipped, comfortable, welcoming and secure.

Our self-contained campus is easy to get around and – crucially – our students say it feels like home.

We've ensured that you'll have convenient access to the facilities you'll need during the course of an average day – without having to leave the campus. Studying, socialising, sport and shopping – all within strolling distance of each other. You'll find numerous cafés, coffee shops, snack bars and restaurants; two bars and a nightclub; the Sports and Fitness Centre plus the playing fields and 3G pitches; a well-stocked shop and bookstore.

In fact, the only thing we're more proud of than our superb amenities is the sense of community and belonging that you'll notice as soon as you arrive.

The 'student quarter'

Close to campus, there's a vibrant University Quarter – a second home for our students and a popular place to live – where the leafy 'Avenues' residential area nestles alongside an eclectic selection of coffee shops, eateries and boutiques on Princes Avenue and Newland Avenue. It's a lively, bohemian part of town, peppered with unique places and interesting people.



Students on campus in front of the Allam Medical Building

Our campus facilities

Our campus is more than the impressive buildings and the world-class facilities. We know what makes us so brilliant is the talent that comes together in it.

An environment that nurtures and promotes learning certainly helps. That's why we're taking the whole thing up a level. We're investing £200 million on continuing to enhance our campus as a high-tech hub of education and research - so you'll have the best platform to develop, discover, explore and shine.

Space to learn

Our Brynmor Jones Library is one of the finest of its kind in the country, following a £28-million refurbishment. It's now a state-of-the-art facility with flexible spaces for silent study, innovative teaching and group projects. So however you want to work, there's a space for you here.

As well as more than a million books, journals and periodicals, and a repository of digital information (all on tap 24/7 during semesters), you'll find an array of helpful technology, art exhibitions and a stylish café - so the library's now a place to feed your mind and your stomach. You'll also love the panoramic views from our seventh-floor observatory.

The library has a dedicated lounge for postgraduate research students, 30 study rooms that you can book - some with audio-visual facilities - as well as 350 open-access PCs, laptops you can borrow, multifunction printers, scanners and photocopiers, and self-service issuing facilities. Even the comfy chairs have concealed power sockets for handy charging.

Fully connected

There are more than 1,100 open-access computers and 1,600 study spaces around the University for you to use. You'll probably want to bring your own equipment too, and our high-speed WiFi network means you can use your own laptop and tablet wherever you go.



Allam Medical Building



Middleton Hall

Arts showcase

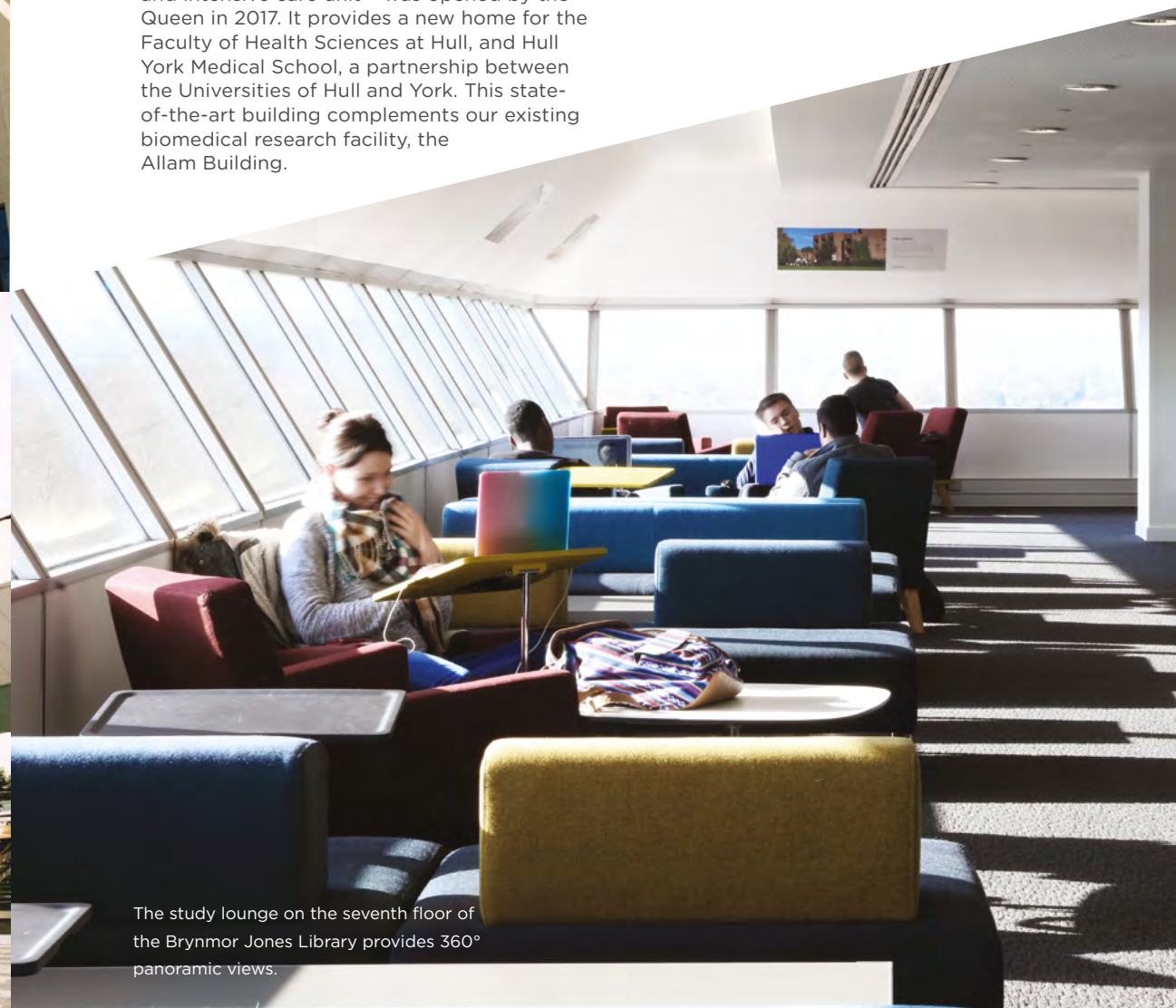
We've transformed our Middleton Hall into a world-class concert and performance venue. This £9.5-million investment gives you access to some of the best facilities of their kind in the UK - including a concert hall, surround-sound cinema and industry-standard recording and rehearsing facilities. It also offers regular cinema screenings and an exciting programme of live performances for students to enjoy.

Healthy future

The first phase of our new health campus, featuring some of the country's most advanced medical training facilities - including a full mock hospital ward, operating theatre and intensive care unit - was opened by the Queen in 2017. It provides a new home for the Faculty of Health Sciences at Hull, and Hull York Medical School, a partnership between the Universities of Hull and York. This state-of-the-art building complements our existing biomedical research facility, the Allam Building.

Investing in sport

And our ambition doesn't stop there. We know how important sports facilities are to our students. So, we're spending £16 million on upgrading them. The work includes a new sports centre featuring a strength and conditioning suite, a 120-station fitness suite and a 12-court sports hall - including international-standard netball courts. And our new football hub - created with support from the Premier League and the Football Association - includes the region's only third generation (3G) artificial grass pitch to meet international standards for both football and rugby.



The study lounge on the seventh floor of the Brynmor Jones Library provides 360° panoramic views.

Your student union

All students at the University of Hull are automatically members of Hull University Union (HUU), which you can find at the centre of the campus. Meet friends, grab some food or relax between lectures, and enjoy all kinds of support and services.

We have a number of cafés and bars for you to enjoy: Eats, which sells hot and cold food; Eats Italia, serving delicious pizza and sides hot from the oven; Sanctuary, which has a real pub feel, a lovely beer garden and a great menu; and the recently refurbished John McCarthy Bar (or 'the Johnny Mac' to most students), which is a laid-back bar serving fresh coffee and food throughout the day.

Our 2,500-capacity, £3.6-million nightclub, Asylum, is an awesome venue for a night out. We have attracted big-name acts such as Sigala, Rita Ora, Tinie Tempah, Miles Kane, Blossoms, Chase & Status, The Streets and Kasabian. We run two weekly club nights: Tower, every Wednesday, and Brassick, every Saturday. We also hold karaoke nights every Thursday and the HUU Big Quiz on Sundays, as well as hosting regular live music events and, of course, our legendary End of Year Ball.

One of our key roles is to act as the student voice in the University. We recruit students like you to be course and faculty reps, elected to raise issues or problems to members of University staff and heads of departments. There are specific representatives for postgraduate, mature and part-time students, as well as Sabbatical Officers, who run the union itself.

Did you know?

HUU is for every student at Hull. In recent years, for example, Chuby Okide from Nigeria was elected to the prestigious role of HUU President.

Up on the first floor is our membership services area, where you can sign up for sports teams and societies, find part-time work to fit alongside your studies or visit your Sabbatical Officers. And on the third floor is our Advice Centre, where you can get free, friendly independent and impartial advice on all sorts of issues including money and debt, loans, grants and bursaries, housing, welfare benefits, academic issues, tax credits and disability benefits. Whatever support you need, Hull University Union is here to provide it.

BBC Radio One DJ Nick Grimshaw brought his playlist and banter for our End of Year Ball



Get involved!

Over 140 sports clubs, societies and faith groups



HUU is a charity run by students, elected by their fellow students.

Any profit generated goes straight back into the student experience.



Societies and sport

Here at Hull you can get involved in all sorts of extracurricular activities – ranging from societies and sports to volunteering and the media.

Once you arrive at the University, it couldn't be easier to discover these activities. We hold fairs where all our activities groups have the chance to showcase what they do. You can go along and chat to them to find out how to get involved and when their first meetings or matches are.

A society for everything and everyone

A society is a group of students with a common interest, giving you an easy way to make new friends and explore your passions and talents.

Our societies represent a wide range of interests. There are all the ones you might expect – such as the Debating Society or Performing Arts Society – but there are also some surprising ones like our Pokemon, Anime, *Dr Who* and *Game of Thrones* Societies.

We also have a number of international-themed societies including:

- Afro-Caribbean Society
- Asian Society
- Chinese Student Scholars Society
- Hindu Society
- Hong Kong Society
- Islamic Society
- Japanese Society
- Jewish Society
- Korean Culture Society
- Kuwaiti Students Society
- Malaysian Student Association
- Saudi Society
- Tamil Society
- Vietnamese Society



Play sport

The Athletic Union is the home of sport at the University of Hull. With more than 50 sports clubs, we offer everything from tennis and trampolining to fencing and figure skating.

Many of our clubs compete in the British Universities and Colleges Sport (BUCS) league every Wednesday – so if competition is what you relish, look no further. Many of our non-BUCS teams also compete weekly in local leagues or other competitions at all levels. Whether you're a seasoned competitor or a complete beginner, we have a place for you.

All our clubs are friendly, approachable and open for anyone to join at any time of the year. They organise social events alongside their sport including attending our weekly club night, Tower. We also offer a number of intramural leagues (competing against other teams within the University of Hull), so whatever your ability we offer something for you.

Other activities

As well as sports teams and societies, there are lots of other types of activity to get involved in. You could become a volunteer in the local community via our student-led Hull University Social Services Organisation. You could contribute to our *Hullfire* newspaper, *Hullfire* radio and *Hullfire* TV, which are also student led and provide excellent opportunities to get hands-on in a media environment.

Supporting your experience

Your wellbeing and education are all that matter. We want you to feel welcome and at home with us, and we offer plenty of support to make sure you do.

International Office

Even before you arrive at the University, you'll have been in contact with our International Office. We travel overseas to meet students, deliver pre-departure briefings and we are available to provide support and advice about the application process. If you would like to request a meeting or find out when we will next be visiting your country, contact us at global@hull.ac.uk.

Immigration advice

Our team of immigration advisers (International Engagement Team) is here to provide advice and information on a range of issues, including extending your student visa; your status in the UK and your legal obligations; immigration for family members; and working during your studies. As part of our service, we offer one-to-one appointments, group sessions and visa workshops timetabled throughout the year, as well as email and telephone advice. Contact us on immigration@hull.ac.uk or call +44 (0)1482 462222.

Pick-up and welcome service

To make sure that our new international students feel immediately at home, the University provides a free welcome and transport service to those who choose to arrive during our preferred arrivals period at Manchester Airport.

Student welfare

The University of Hull has always treated the welfare of its students as a priority. Academic, social and personal support is embedded within our faculties, accommodation and students' union. If you ever have a problem, help is always available.

Our Student Wellbeing, Learning and Welfare Support Service offers help with issues including health and wellbeing, disabilities, immigration, money and learning difficulties.

And the Student Advice Centre, based in the students' union, is run by trained student volunteers and offers free and impartial guidance on matters such as health and mental health, budgeting and finance, housing and tenancy, study problems and employment issues.

Safety on and off campus is excellent, with the students' union crime prevention group providing advice, support and guidance should you need it. This group is assisted by the local police force's Liaison Officer and 24-hour campus security.

Faith

Our chaplaincy team provides a caring, spiritual presence for students of any faith or none. We have an extensive and inclusive range of connections with faith groups. Facilities for prayer and worship are available on campus and students are also warmly welcomed into faith groups in the local community. To find out more about how our support services can enhance your student experience, go to www.hull.ac.uk/support.



Supporting your studies

As one of our new international students you may need a little time to adjust to the academic system here in the UK. At the University of Hull, we have many services and helpful members of staff to help make this process easier for you. If you have any questions about your studies, please just ask for assistance: we will be glad to help.

Research supervision

On our taught courses, you will come into regular direct contact with our academic staff in lectures and seminars, where you are always welcome to ask questions. And on our taught and research degrees you will also have tutorials throughout your studies, and an academic will act as your individual supervisor.

You will have stimulating discussions about your subject and the supervisor will share his or her expertise to refer you to the latest research in the field.

Your supervisor will also give you reassurance and direction, providing you with valuable feedback on your progress and on specific pieces of work. Finally, your supervisor can refer you to the appropriate student advisory services for any additional support you may require.

Skills team

Studying in a new University, let alone a new country, can seem difficult at first. At Hull, we understand these challenges and provide you with plenty of support.

The Skills Team is based in the University library and provides a wide range of study and research skills help.

It includes self-help online resources, specialist postgraduate workshops and even individual personalised appointments.

We provide support in areas such as academic writing, mathematics and critical thinking via email, Skype, telephone or in person.

As an international postgraduate student you already have some study and research skills so our support will help you manage your time and work efficiently.

You may also need help learning new study methods, using research tools and knowing how to manage, analyse and report your data effectively.

So we provide support on

- developing search strategies
- finding quality journal articles
- managing your references
- speed reading
- how to write critically
- effective digital research
- time management
- data analysis tools
- preparing your thesis

The Skills Team provides confidential and friendly help to support all aspects of your academic study skills needs.

We provide support for all postgraduate students across all disciplines so when you need help planning, analysing and reporting on your studies, come and visit us!

Language provision

You'll have access to our dedicated Shoosmith Language Learning Centre, which is open 24/7 in the library at the heart of the campus. A team of language learning advisors will be on hand to help you get the most out of the excellent facilities available. There is also access to specialist IT facilities, with the latest language learning and translation software.

If you need to improve your English language skills before you start your degree, we offer a range of courses to suit your needs - see www.hull.ac.uk/efl for details.



 Elizabeth found Hull the perfect place to live and study

“I love the University of Hull. I came here because it has a serene environment for learning. And also it's a peaceful place to live and study with lots of friendly people around. I have learnt how to critically evaluate things, teamwork, time management and working independently on my research for a long duration of time.”

Uchechukwu Elizabeth Edeh
PhD Human Resource Management

Your accommodation

Make yourself at home at the University of Hull

We've got a range of accommodation to choose from - there's something for everyone. On campus; off campus; catered; self-catered. In the thick of it, or somewhere quiet and out of the way. From really affordable to really impressive - we've got the perfect base for your brilliant first year at university.

As long as you apply by 1 September 2019, all unaccompanied new students are guaranteed a room in University-owned, managed or directed accommodation. Most of our residential options for new students have utility bills, internet charges and contents insurance included in the rent. All University-owned accommodation includes 50Mbps WiFi (you can connect up to seven devices at once).

Rest easy

Our students are the most important part of this university, so giving you a comfortable and safe place to learn is a top priority for us. In addition to residential wardens and house tutors, we provide a 24-hour on-campus security service.



The Courtyard



This recently completed development has to be seen to be believed. It's high-end quality, it's on campus and it has 562 en-suite rooms with modern, light interiors.

With various comfy lounges, a games room and a cinema room, The Courtyard is a vibrant living and learning environment. You'll be perfectly placed not only for getting to lectures but for getting maximum enjoyment out of the campus' fantastic facilities in the evenings.

Key features

- Self-catering
- Bike storage
- All bills and basic personal possessions insurance included
- FREE access to our campus-wide high-speed WiFi
- Laundry facilities
- *Masterchef*-style kitchen for those special dining occasions

Prices range from **£132.66 per week** for a **standard ensuite room** to **£149.56 per week** for a **deluxe room**.
If you fancy something special, a **rooftop apartment** costs **£185.69 per week** (2018/19 rates).

Taylor Court



Taylor Court enjoys an enviable location on campus. Made up of 12 individual blocks, each with 24 rooms and overlooking a communal courtyard, there's a great mix of people in this small, friendly community.

All rooms have en-suite facilities and there are shared kitchen/dining areas, too. This safe and secure environment features an electronic entry system and 24-hour on-campus security service.

Key features

- Self-catered
- All rooms have en-suite facilities
- All bills and basic personal possessions insurance included
- FREE broadband access at 50mbps, plus KeyView TV (high-quality digital TV direct to your computer)*
- Cleaning of communal areas

Fees: **£121.03 – £124.11 per week**
(2018/19 rates)

Student houses



In the streets close to campus, you'll find our student houses, some of which are owned by the University and some by our partners. Most of your neighbours will be University students, so it's a vibrant community.

Most of our houses accommodate five people and offer self-catered accommodation in single rooms with shared kitchen and bathroom facilities. Limited street parking is available, and some houses have lockable bike sheds.

Key features

- Self-catered
- Close to campus
- All bills and basic personal possessions insurance included
- FREE broadband access at 50mbps, plus KeyView TV (high-quality digital TV direct to your computer)*
- House tutors available 24/7 to offer support should you need it

Fees: **£64.33 – £128.10 per week**
(2018/19 rates)

*You'll need a colour TV licence to use this facility. Go to www.tvlicensing.co.uk.

*You'll need a colour TV licence to use this facility. Go to www.tvlicensing.co.uk.



WESTFIELD COURT

New £130-million on-campus residences

New for 2018, our brand new development on the west of campus offers a mixture of high quality, self-catered rooms for 478 students (phase one).

Designed for modern student living, this spacious contemporary accommodation ranges from single rooms to one-bedroom apartments and comes with free WiFi up to 100mbps.

An urban avenue will offer a range of amenities including laundry facilities, indoor and outdoor recreation spaces, bike storage and a reception area.

As this development is ongoing, residents should expect some construction activity.

For the latest information about the University's student accommodation, please go to www.hull.ac.uk/accommodation.



Fees: **£127.33 – £143.22 per week**
(2018/19 rates)

2019/20 Tuition fees

	International (non-EU)		International (EU)	
Arts and Social Sciences	PGT	PGR*	PGT*	PGR*
Criminology, Drama, Education and Teaching, English, Film and Digital Media, History, Law, Modern Languages, Music, Philosophy, Politics, Social Work, Social Sciences	£14,000	£14,000	£6,755 - (£5,820 social work)	£4,260

Business, Economics and Finance	PGT	PGR*	PGT*	PGR*
Accounting and Finance, Business and Management, Economics, Logistics and Supply Chain Management, Marketing	£15,600	£14,000	£8,830 - (£7,275 Economics)	£4,260
MSc Professional Accounting	£17,585*	-	£13,585	-
MSc Business Management (with internship)	£17,000*	-	£10,830	-

Science (non-laboratory)	PGT	PGR*	PGT*	PGR*
Mathematics	-	£15,300	-	£4,260

Science (laboratory)	PGT	PGR*	PGT*	PGR*
Biomedical Science, Chemistry, Computer Science, Engineering, Psychology	£16,600	£16,000	£7,275	£4,260

Nursing / Other subjects allied to medicine	PGT	PGR*	PGT*	PGR*
Health, Nursing and Midwifery	£16,600	£16,000	£7,275	£4,260

Hull York Medical School
See website for more details

New international students paying standard tuition fees receive a discount of up to £3,500 per year (includes £1,000 extra for students from low and lower middle income countries as defined by the World Bank).

For further information about the costs of studying postgraduate taught and postgraduate research programmes at Hull and the financial support available please see www.hull.ac.uk/money.

*2018/19 fee - 2019/20 fees have not yet been confirmed and may increase.

Cost of living

The city of Hull offers one of the best-value student destinations in the UK, and tops the charts for low-cost student housing.

In a recent survey conducted by student accommodation company Student.com, Hull was found to be the cheapest city in the UK for student housing, with students spending 50% less on their rent than the UK national average.





The 2018 Student Living Index conducted by UK bank NatWest also revealed Hull to be a particularly affordable place to live. The location of our campus residences means that daily travelling costs are low (or non-existent) and shops selling food, clothes and other everyday items are within easy walking distance.

Personal expenditure

You will be required to show that you have enough money to support yourself, and any dependants you bring to the UK with you, during your studies.

For more information, please see www.hull.ac.uk/international or the UKVI website at www.gov.uk/tier-4-general-visa. You can also email immigration@hull.ac.uk or call +44 (0)1482 462222.

Average price[†] of a ...

CINEMA TICKET FOR NEW RELEASE  HULL £9 LONDON £12	MONTHLY RENT (ONE-BED CITY-CENTRE FLAT)  HULL £499.67 LONDON £1657.96	MEAL IN A BUDGET RESTAURANT  HULL £12 LONDON £15	MONTHLY GYM MEMBERSHIP  HULL £27.60 LONDON £47.68
--	--	---	--

[†] All figures sourced from Numbeo.com

Your choice of courses



Accounting and Finance	40
American Studies	42
Biological and Environmental Science	44
Biomedical Science	46
Business and Management	48
Chemical Engineering	50
Chemistry	52
Computer Science	54
Criminology	56
Drama	58
Economics and Business Economics	60
Education, Teaching and Childhood Studies	62
Electrical and Electronic Engineering	64
English	66
Film and Digital Media	68
Geography and Geology	70
Health, Nursing and Midwifery	72
History	74
Law	76
Logistics and Supply Chain Management	78
Marketing	80
Mathematics	82
Mechanical Engineering	84
Medical and Biomedical Engineering	86
Medicine	88
Modern Languages and Cultures	90
Music	92
Philosophy	94
Physics and Astrophysics	96
Politics and International Studies	98
Psychology	100
Social Work, Youth and Community Development	102
Sociology and Social Sciences	104
Sport, Health and Exercise Science	106

Accounting and Finance

Postgraduate Taught

The financial crisis of recent years has shown that it has never been more important to understand the functions of accounting and finance within a business setting. Where better to do it than in the UK, home to one of the world's largest financial centres?

You will explore traditional and contemporary developments in financial practice and draw on relevant research as a foundation on which to build strategic approaches to accounting and finance.

Our suite of MSc programmes showcase the Business School's expertise in this area, while our specialist MSc Professional Accounting also benefits from our links with Kaplan, to prepare you for the ACCA professional exams.

And the MSc Finance and Investment and MSc Financial Management programmes have designation from the CFA Institute, the world's most respected and recognised investment credential.

Our research-active staff bring their internationally recognised expertise to the lecture theatre, combining cutting-edge theory with live, real-world case studies and practical knowledge.

Postgraduate Research

Our world-leading experts in accounting and finance welcome applications from postgraduate students interested in higher degree research across a broad range of topics.

Accounting research examines how accounting information is identified, measured, valued, and disclosed.

It considers how stakeholders use accounting information, the regulatory environment, the effects of standard setting bodies, and the judgment and decision making of accounting professionals and other stakeholders.

Our finance group conducts research on the social, economic, and organisational aspects of financial reporting, corporate finance and governance, corporate social responsibility and sustainability, banking, risk management, accountability and governance.

It has a particular focus on applied research as many members have professional work experience.

Specific areas of research supervision where applications are welcomed include taxation, international banking, corporate finance and corporate governance, management accounting, public sector accounting, and accounting issues in developing and emerging economies.



Postgraduate Taught

Course	Award / Level	Study Mode	Duration	IELTS*
MSc Accounting and Finance	MSc	FT	1 Year FT	6.0/5.5
MSc Finance and Investment	MSc	FT	1 Year FT	6.0/5.5
MSc Financial Management	MSc	FT	1 Year FT	6.0/5.5
MSc Professional Accounting	MSc	FT	15 Months*	6.0/5.5

Most postgraduate taught programmes start in September. Some courses also have January and June start dates – please contact us at global@hull.ac.uk for specific details.

*1 year for the MSc and 3 months to complete ACCA professional examinations

Postgraduate Research

Subject Area	Award / Level	Study Mode	Duration	IELTS*
Accounting and Finance	PhD	FT / PT	4 Years FT / 7 Years PT	6.0/5.5

Most postgraduate research degrees can start in September, January and June. Please contact us at international@hull.ac.uk

*These are academic IELTS requirements and indicate 'overall/no less than in each skill' level. See www.hull.ac.uk for other acceptable English language qualifications. If you need to improve your English language skills to meet these entry requirements, we offer preparation courses – please see www.hull.ac.uk/efl for further details.

American Studies

Postgraduate Research

Hull pioneered American Studies in Britain and, after more than half a century, we have one of the finest collections of American resources of any British university, a superb archive for our postgraduate research students.

Our academic staff have distinguished national and international reputations for teaching and research, and welcome applications for postgraduate research across a broad range of topics.

Our principal areas of research include censorship, propaganda and radicalism in American culture; history, race and gender in the US; and American dreams and nightmares. Areas of historical expertise include gang culture, history on film, Mexican-American history, the African-American experience, the Civil Rights Movement, the Cold War era and 20th-century American society.

In literary and cultural studies, our specialisms include cinematic and televisual narratives, conspiracy culture at the turn of the millennium, modern American poetry, Modernist and Postmodernist aesthetics, 20th-century visual art and radical culture.

One of our strengths is our ability to carry our research across disciplinary borders. For example, one recent project drew upon cultural studies, gender studies and political history to explore 'Masculinity and Myth in Marvel Comics, 1961-74'.



Postgraduate Research

Subject Area	Award / Level	Study Mode	Duration	IELTS*
American Studies	PhD	FT / PT	4 Years FT / 7 Years PT	6.0/5.5

Most postgraduate research degrees can start in September, January and June. Please contact us at international@hull.ac.uk

*These are academic IELTS requirements and indicate 'overall/no less than in each skill' level. See www.hull.ac.uk for other acceptable English language qualifications. If you need to improve your English language skills to meet these entry requirements, we offer preparation courses – please see www.hull.ac.uk/epl for further details.

Biological and Environmental Science

Postgraduate Taught

Our MSc in Environmental Change, Management and Monitoring tackles some of the most pressing issues of our time including climate change, pollution and invasions by non-native species.

Marine environmental management, meanwhile, is becoming ever more challenging and complex. Global factors such as climate change, the loss of the Arctic ice cap and increasingly globalised trade in seafood are all having a huge impact.

Our programme will give you an understanding of marine environmental processes and policies at local, national, European and global scales. Two pathways have been created, one for those interested in fisheries science and the other for those interested in marine ecology.

We are a member of the GU8 consortium, a group of port city universities from across the world, providing us with international collaborative links. We also enjoy strong, well-established industry links.

Hull's location on the Humber Estuary, with a large ports complex and growing renewable energy industry, and our established partnership with The Deep, Hull's internationally famous submrium, provides students with plenty of opportunities to move from bench to environment.

Postgraduate Research

The University of Hull has developed an international reputation for our research in biological and environmental science and our experts welcome applications for postgraduate supervision across a wide range of areas.

Our biology research examines the varied processes which shape individual, population and species diversity, including behavioural ecology, evolution of biodiversity, evolutionary and environmental genomics, invasion biology, phylogenetics and molecular evolution.

When it comes to environmental science, we are recognised as a leading centre for research into issues of global importance such as climate change, globalisation, renewable energy and low-carbon futures.

We collaborate with scientists from around the world, and with the University's Hull International Fisheries Institute (HIFI) and the Institute of Estuarine and Coastal Studies (IECS) to deliver research of the highest quality.

Our state-of-the-art research facilities include advanced instrumentation and environmentally-controlled tropical and cold water aquarium systems, as well as access to local resources including the Humber Estuary, the Yorkshire countryside and coast, and The Deep submrium.



Postgraduate Taught

Course	Award / Level	Study Mode	Duration	IELTS*
MSc Environmental Change, Management and Monitoring	MSc	FT	1 Year FT	6.0/5.5
MSc Marine Environmental Management (Ecology)	MSc	FT	1 Year FT	6.0/5.5
MSc Marine Environmental Management (Fisheries)	MSc	FT	1 Year FT	6.0/5.5
MSc Public Engagement and Science Communication	MSc	FT	1 Year FT	6.5/6.0

Most postgraduate taught programmes start in September. Some courses also have January and June start dates - please contact us at global@hull.ac.uk for specific details .

Postgraduate Research

Subject Area	Award / Level	Study Mode	Duration	IELTS*
Biological and Environmental Studies	Msc by Research	FT / PT	1 Years FT / 2 Years PT	6.0/5.5
Biological and Environmental Studies	PhD	FT / PT	4 Years FT / 7 Years PT	6.0/5.5

Most postgraduate research degrees can start in September, January and June. Please contact us at international@hull.ac.uk.

*These are academic IELTS requirements and indicate 'overall/no less than in each skill' level. See www.hull.ac.uk for other acceptable English language qualifications. If you need to improve your English language skills to meet these entry requirements, we offer preparation courses - please see www.hull.ac.uk/efl for further details.

Biomedical Science

Postgraduate Taught

Train for a career at the cutting edge of life-saving research and diagnostics. Be inspired by our expert lecturers whose innovative work has been ranked as internationally excellent.

You'll have access to some of the finest facilities in the country including state-of-the-art labs, our own dedicated PET (Positron Emission Tomography) Research Centre and the world-class Daisy Laboratories at Castle Hill Hospital.

NHS professionals help design our modules and we have excellent links with local biotechnology companies, research units and hospitals.

Our MSc in Biomedical Science covers the principles of human biology in health and disease, providing you with an advanced understanding of the latest developments in the field.

The University has an international reputation for research focused on oncology, the cardiovascular system and metabolic diseases.

You'll gain an understanding of the ethical and moral consequences of research and make use of the principles of scientific inquiry in the context of evidence-based practice.

This programme will give you the knowledge and skills needed to work at the forefront of medical science research. It is also ideal preparation for PhD study.

Postgraduate Research

The University of Hull has developed an international reputation for our research in the field of biomedical science and we welcome applications for postgraduate research across a wide range of topics.

Our world-leading research focuses on metabolic and cardiovascular diseases, wound healing and cancer. By bringing together academics and health professionals, we quickly translate research into tangible benefits for patients.

We are acknowledged experts in oncology, the cardiovascular system and metabolic diseases, as well as the cellular processes involved in metabolism and energy transduction in health and disease.

Our cutting edge facilities include the £10 million Allam Building, the University's PET (Positron Emission Tomography) Research Centre, which hosts the only research-dedicated cyclotron in the UK, and a state-of-the-art modern spectrometry and microscopy suites.

The University has a long-established history of collaboration with NHS scientists and a strong relationship with the Institute of Biomedical Science.

We have excellent links with local biotechnology companies, research units and hospitals, including the world-class Daisy Laboratories at Hull's Castle Hill Hospital where new technology is being developed to treat cancer, heart conditions and respiratory problems.



Postgraduate Taught

Course	Award / Level	Study Mode	Duration	IELTS*
MSc Biomedical Science	MSc	FT	1 Year FT	6.0/5.5

Most postgraduate taught programmes start in September. Some courses also have January and June start dates - please contact us at global@hull.ac.uk for specific details.

Postgraduate Research

Subject Area	Award / Level	Study Mode	Duration	IELTS*
Biomedical Science	MSc by Research	FT / PT	1 Years FT / 2 Years PT	6.0/5.5
Biomedical Science	PhD	FT / PT	4 Years FT / 7 Years PT	6.0/5.5

Most postgraduate research degrees can start in September, January and June. Please contact us at international@hull.ac.uk.

*These are academic IELTS requirements and indicate 'overall/no less than in each skill' level. See www.hull.ac.uk for other acceptable English language qualifications. If you need to improve your English language skills to meet these entry requirements, we offer preparation courses - please see www.hull.ac.uk/efl for further details.

Business and Management

Postgraduate Taught

Hull University Business School equips managers to succeed in a fast-changing and interconnected business world.

Today's demanding business arena requires managers who can master advanced techniques in order to deal with the complexities of the international business environment.

Our suite of programmes is designed to give students the key academic knowledge, as well as the necessary practical skills, to become competent and confident professionals.

You will develop the analytical skills to make informed decisions when dealing with a range of management issues, always considering the wider environment in which organisations operate and the social impact of the choices you make.

We are a leading UK business school with internationally recognised accreditations from the Association of MBAs (AMBA) and the Association to Advance Collegiate Schools of Business (AACSB) - held by fewer than 5% of the world's 13,000 business programmes.

Hull University Business School is also a Chartered Institute of Personnel and Development (CIPD) Approved Centre so graduates of the MSc in Human Resource Management can apply to the CIPD to upgrade to Chartered Member status.

Postgraduate Research

We offer an inspirational environment for researchers in the early stages of their careers.

We offer research degrees in a wide range of business areas including management, accounting, economics, finance, human resource management, marketing and systems science.

Our academics are called upon for their research expertise by governments and business organisations around the world, from New Zealand to Colombia to the Netherlands.

We undertake innovative research that not only breaks new ground, but makes a difference locally, regionally, nationally and globally.

Research students are closely supported and given opportunities to travel, attend conferences and are encouraged to be an integral part of the research community at the Business School.

Campus facilities for research students are excellent, with flexible study spaces, high-tech learning labs, subscriptions to industry-standard databases and one of the country's leading libraries.

And the business school environment is an inspiring collection of Grade II listed buildings, seamlessly integrated with modern equipment to provide a wonderful place to study, work and meet.



Postgraduate Taught

Course	Award / Level	Study Mode	Duration	IELTS*
Executive MBA (on campus)	MBA	PT	2 Year PT	6.5/5.5
MSc Business Management	MSc	FT	1 Year FT	6.0/5.5
MSc Business Management (with internship)	MSc	FT	1 Year 4 Months FT	6.5/6.0
MSc International Business	MSc	FT	1 Year FT	6.0/5.5
MSc Human Resource Management	MSc / PG Dip*	FT / PT	1 Year FT / 2 Years PT	6.5/6.0

*PG Diploma part-time only

Most postgraduate taught programmes start in September. Some courses also have January and June start dates - please contact us at global@hull.ac.uk for specific details.

Postgraduate Research

Subject Area	Award / Level	Study Mode	Duration	IELTS*
Business and Management	PhD	FT / PT	4 Years FT / 7 Years PT	6.0/5.5

Most postgraduate research degrees can start in September, January and June. Please contact us at international@hull.ac.uk.

*These are academic IELTS requirements and indicate 'overall/no less than in each skill' level. See www.hull.ac.uk for other acceptable English language qualifications. If you need to improve your English language skills to meet these entry requirements, we offer preparation courses - please see www.hull.ac.uk/efl for further details.

Chemical Engineering

Postgraduate Taught

The Humber is the largest trading estuary in the UK and the fourth largest in Europe, with a chemical and process sector worth £6 billion a year.

It is also Britain's 'energy estuary' - at the heart of the country's renewables industry - making Hull the ideal location for your studies.

You benefit from studying near over 350 engineering and process giants - including Phillips66, Total, Novartis, BP Chemicals, Croda, Cristal, Smith & Nephew and RB (formerly Reckitt-Benckiser).

Our MSc in Energy Engineering offers pathways in either renewable energy technologies or energy technologies in building.

It places a strong emphasis on the practical application of knowledge. Our strong, direct links with industry, provide you with plenty of opportunities to work on real-world engineering projects.

The MSc in Energy Engineering programme is accredited by the Institution of Engineering and Technology (IET) and meets the academic criteria for registration as a Chartered Engineer.

Our MSc in Engineering Management, meanwhile, provides in-depth strategic knowledge for graduates from all engineering disciplines who aspire to senior management roles.

Postgraduate Research

The University's chemical engineering research addresses some of the biggest issues of modern times.

Our research students benefit from carrying out their studies on the Humber Estuary - one of the fastest-growing chemical bases in the UK, with investment exceeding £1 billion a year.

The challenges facing the world today are complex and require a multidisciplinary approach.

As a general engineering department, we are able to bring together a wide range of expertise, experience and facilities to solving such problems.

We have a long history of excellence in research and in the application of research to address real world problems.

In the latest Research Assessment Framework exercise (REF 2014), 99% of our research submissions were judged to be 'internationally recognised', with 75% classed as 'world-leading' or 'internationally excellent'.

Our multi-disciplinary research interests are broadly themed around three key areas - energy and environment, medical engineering, and sustainable engineering.



Postgraduate Taught

Course	Award / Level	Study Mode	Duration	IELTS*
MSc Energy Engineering	MSc	FT	1 Year FT	6.0/5.5
MSc Engineering Management	MSc	FT	1 Year FT	6.0/5.5
MSc Public Engagement and Science Communication	MSc	FT	1 Year FT	6.5/6.0

Most postgraduate taught programmes start in September. Some courses also have January and June start dates - please contact us at global@hull.ac.uk for specific details.

Postgraduate Research

Subject Area	Award / Level	Study Mode	Duration	IELTS*
Chemical Engineering	MSc by Research	FT / PT	1 Years FT / 2 Years PT	6.0/5.5
Chemical Engineering	PhD	FT / PT	4 Years FT / 7 Years PT	6.0/5.5

Most postgraduate research degrees can start in September, January and June. Please contact us at international@hull.ac.uk.

*These are academic IELTS requirements and indicate 'overall/no less than in each skill' level. See www.hull.ac.uk for other acceptable English language qualifications. If you need to improve your English language skills to meet these entry requirements, we offer preparation courses - please see www.hull.ac.uk/efl for further details.

Chemistry

Postgraduate Taught

Chemistry students at Hull work closely with our world-class researchers and enjoy access to modern laboratories and equipment.

You study under leaders in the field, including members of the pioneering liquid crystal display (LCD) research team, now spearheading the next generation of display technology – organic light-emitting diodes (OLEDs).

The University continues to invest in chemistry with the latest mass spectrometry facilities and brand new resources including laser technology for elemental analysis and a microfluidic fabrication capability.

Our MSc in Analytical and Forensic Chemistry is aimed at students with a strong interest in modern instrumentation and in novel methods of chemical and forensic analysis.

It aims to meet a strong, worldwide demand for imaginative, skilled analysts to provide invaluable evidence from investigations of disasters, accidents and criminal activities.

We also offer Masters-level distance-learning programmes in occupational health, safety and environmental management.

They are the only courses of their kind, created with and endorsed by NEBOSH, and offer those already working in industry and holding a NEBOSH diploma or BSc the chance to enhance their skills and techniques.

Postgraduate Research

Be inspired by leaders in the field – from members of the team that paved the way for LCD technology to researchers in lab-on-a-chip miniaturised chemistry.

By choosing Chemistry as a postgraduate researcher at Hull you will be joining a vibrant and forward-thinking community. You can study at a variety of levels, right up to PhD.

Our academic experts welcome applications for supervision across a broad range of topics, including analytical sciences, medicinal and imaging chemistry, synthesis and catalysis, and materials chemistry.

We have some of the best-developed research links and industrial collaborations of any chemistry group in the UK, including projects with AstraZeneca, GlaxoSmithKline, Pfizer, RB (formerly Reckitt-Benckiser), Schlumberger and Unilever.

You will join established research groups and find that we combine research expertise and cutting-edge facilities to deliver a unique experience.

We pride ourselves on supporting our postgraduate students to make sure that you achieve your full potential.



Postgraduate Taught

Course	Award / Level	Study Mode	Duration	IELTS*
MSc Analytical and Forensic Chemistry	MSc	FT	1 Year FT	6.0/5.5
MSc/MRes Environmental Management (NEBOSH)**	MSc/MRes	PT	2 Years PT	6.0/5.5
MSc/MRes Occupational Health and Safety Management (NEBOSH)**	MSc/MRes	PT	2 Years PT	6.0/5.5
MSc/MRes Occupational Health, Safety and Environmental Management (NEBOSH)**	MSc/MRes	PT	2 Years PT	6.0/5.5
MSc Public Engagement and Science Communication	MSc	FT / PT	1 Year FT / 2 Years PT	6.5 / 6.0

Most postgraduate taught programmes start in September. Some courses also have January and June start dates - please contact us at global@hull.ac.uk for specific details.

****Places are limited, apply as soon as possible.**

Postgraduate Research

Subject Area	Award / Level	Study Mode	Duration	IELTS*
Chemistry	MSc by Research	FT / PT	1 Year FT / 2 Years PT	6.0/5.5
Chemistry	MRes	FT	1 Year FT	6.0/5.5
Chemistry	PhD	FT / PT	4 Years FT / 7 Years PT	6.0/5.5

Most postgraduate research degrees can start in September, January and June. Please contact us at international@hull.ac.uk.

*These are academic IELTS requirements and indicate 'overall/no less than in each skill' level. See www.hull.ac.uk for other acceptable English language qualifications. If you need to improve your English language skills to meet these entry requirements, we offer preparation courses – please see www.hull.ac.uk/efl for further details.

Computer Science

Postgraduate Taught

Computer science has an ever-greater influence on our lives, and the technological breakthroughs of today shape the way we live tomorrow.

Opportunities continue to grow for highly skilled practitioners, and our taught Masters courses allow you to hugely advance your existing skills and knowledge.

Our courses are crafted to the latest industry standards, with our links to companies like Microsoft, Sony and Studio Gobo ensuring that content is up to date and relevant.

We are also affiliated with Microsoft's DreamSpark programme, which allows you to access the latest Microsoft operating systems and development software for home use free of charge.

You will learn specialist computer science techniques and fundamental theories, and have the opportunity to put this knowledge into practice by developing applications and working with real software.

Our postgraduate taught programmes also offer the option of an extra trimester of industry experience, typically working with commercial clients and software.

By the end of the programme you will be equipped to thrive in one of the fastest moving industries in the world.

Postgraduate Research

Computer science at Hull combines innovative research and cutting-edge facilities to deliver a unique experience in your postgraduate journey.

The qualification you earn will allow you to face the challenges that lie ahead in this rapidly-developing industry and obtain a head start in your career.

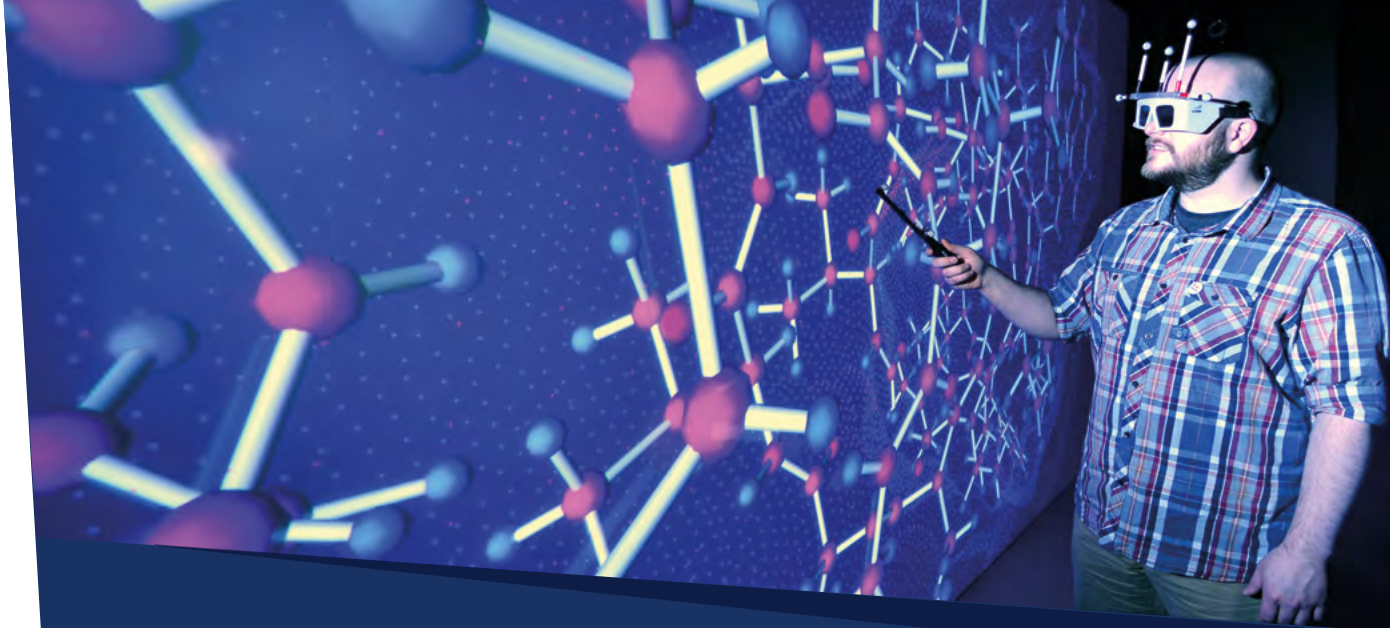
Our academic experts welcome applications for postgraduate research across a range of topics including artificial intelligence and informatics, computational science, computer gamification and instruction, dependable systems, robotics, and simulation and visualization.

We are also affiliated with Microsoft's DreamSpark programme, which allows you to access the latest Microsoft operating systems and development software for home use free of charge.

In the most recent Research Excellence Framework (REF 2014), the UK's assessment of research quality, we were ranked joint fifth in the country for the international, real-world impact of our research.

Studying with us for a postgraduate research degree means you get to benefit from this expertise to solve a world-leading research problem of your own.

Along the way, you will also acquire a wealth of other vital skills and enjoy being part of our active and friendly postgraduate student community.



Postgraduate Taught

Course	Award / Level	Study Mode	Duration	IELTS*
MSc Advanced Computer Science	MSc	FT	1 Year FT	6.0/5.5
MSc Computer Science (Security and Distributed Computing)	MSc	FT	1 Year FT	6.0/5.5
MSc Computer Science (Software Engineering)	MSc	FT	1 Year FT	6.0/5.5
MSc Computer Science for Games Development	MSc	FT	1 Year FT	6.0/5.5
MSc Engineering Management	MSc	FT	1 Year FT	6.0/5.5
MSc Public Engagement and Science Communication	MSc	FT	1 Year FT	6.5/6.0

Most postgraduate taught programmes start in September. Some courses also have January and June start dates - please contact us at global@hull.ac.uk for specific details.

Postgraduate Research

Subject Area	Award / Level	Study Mode	Duration	IELTS*
Computer Science	MSc by Research	FT / PT	1 Years FT / 2 Years PT	6.0/5.5
Computer Science	PhD	FT / PT	4 Years FT / 7 Years PT	6.0/5.5

Most postgraduate research degrees can start in September, January and June. Please contact us at international@hull.ac.uk.

*These are academic IELTS requirements and indicate 'overall/no less than in each skill' level. See www.hull.ac.uk for other acceptable English language qualifications. If you need to improve your English language skills to meet these entry requirements, we offer preparation courses - please see www.hull.ac.uk/efl for further details.

Criminology

Postgraduate Taught

Hull pioneered this exciting area of study more than 30 years ago and has an established reputation as one of the UK's leading criminology centres.

Criminologists investigate the causes, consequences and reactions to crime – and our MA in Criminal Justice and Crime Control enables you to study these issues, applying them to real-world situations, designing, analysing and evaluating criminal justice and crime control strategies.

This course is intended to create sophisticated criminological practitioners, able to navigate the realities of criminal justice and crime control, with superior experience, skills and knowledge of how to think, act and reflect criminologically.

These skills will be developed through classroom discussion and debate, and through encouraging students to seek opportunities for practical engagement with external criminal justice and community safety organisations.

You'll be taught by a team of expert criminologists from a variety of specialist backgrounds, including: law, sociology, psychology, history, and politics.

Postgraduate Research

By choosing criminology as a postgraduate researcher at Hull you will be joining a vibrant and supportive research community covering a wide range of specialisms.

These range from the links between alcohol and violence and the history of crime and punishment to surveillance, green crime, and restorative justice approaches.

If you choose to study for your PhD with us, you will find that we combine research expertise and cutting-edge facilities to deliver a unique experience.

We regard our research students as key participants in our scholarly community and they play an active role in fostering academic debate and developments in our fields of study.

As well as working alongside their supervisors, research students are given opportunities to present and discuss their own and other's work in a supportive and collegial environment.

We also offer a limited number of partial bursaries to help research students attend conferences.

We have an excellent track record in seeing our students through to successful completion and our students have gone on to rewarding careers both within and outside of academia.



Postgraduate Taught

Course	Award / Level	Study Mode	Duration	IELTS*
MA Criminal Justice and Crime Control	MA	FT / PT	1 Year FT / 2 Years PT	6.0/5.5

Most postgraduate taught programmes start in September. Some courses also have January and June start dates - please contact us at global@hull.ac.uk for specific details.

Postgraduate Research

Subject Area	Award / Level	Study Mode	Duration	IELTS*
Criminology	PhD	FT / PT	4 Years FT / 7 Years PT	6.0/5.5

Most postgraduate research degrees can start in September, January and June. Please contact us at international@hull.ac.uk.

*These are academic IELTS requirements and indicate 'overall/no less than in each skill' level. See www.hull.ac.uk for other acceptable English language qualifications. If you need to improve your English language skills to meet these entry requirements, we offer preparation courses – please see www.hull.ac.uk/efl for further details.

Drama

Postgraduate Taught

Superb facilities and expert staff have enabled the University to build on its history as one of the UK's first specialist drama departments.

Our MA in Theatre Making gives you the opportunity to make theatre for a variety of audiences, as well as receiving training in setting up and running theatre companies.

Our broad range of staff expertise has enabled us to design a programme that is challenging, varied, and at the forefront of research in the field of theatre making.

Our facilities include the Grade II-listed Gulbenkian Centre and Middleton Hall, recently transformed into a world-class performance space.

You have opportunities to present your work for public audiences at annual events in the region – and further afield – and to engage with professional theatre companies to discuss your practice and future career.

Students also benefit from links with Hull Truck Theatre, the Stephen Joseph Theatre in Scarborough and with nationally-renowned companies including Opera North, New Diorama Theatre and Out of Joint.

Postgraduate Research

Drama at Hull has a strong reputation for world-leading and internationally excellent research.

Your research might take the traditional form of a wholly written thesis, or it might be based on experimental practice supplemented by written critical commentary.

Whichever route you take, you have the opportunity to expand your own knowledge, and that of the subject area, through original research in a form tailored to your needs, under expert guidance.

We have three well-equipped performance studios – all with backstage facilities, including dressing rooms, control rooms, a design workshop, and costume and prop stores.

Students also benefit from visits by speakers, trips to see performances and professional touring theatre, dance and music performances.

Our experts welcome applications for postgraduate study across a broad range of topics reflecting their interests and our research groups: Theatre and Performance Histories; Practice as Research (especially scenography and digital performance); and Contemporary Theatre Practice (including applied social theatre and playwriting).



Postgraduate Taught

Course	Award / Level	Study Mode	Duration	IELTS*
MA Theatre Making	MA / PG Dip / PG Cert	FT	1 Year FT	6.5/6.0

Most postgraduate taught programmes start in September. Some courses also have January and June start dates - please contact us at global@hull.ac.uk for specific details.

Postgraduate Research

Subject Area	Award / Level	Study Mode	Duration	IELTS*
Drama	MA by Research	FT / PT	1 Year FT / 2 Years PT	6.0/5.5
Theatre and Performance	PhD	FT / PT	4 Years FT / 7 Years PT	6.0/5.5

Most postgraduate research degrees can start in September, January and June. Please contact us at international@hull.ac.uk.

*These are academic IELTS requirements and indicate 'overall/no less than in each skill' level. See www.hull.ac.uk for other acceptable English language qualifications. If you need to improve your English language skills to meet these entry requirements, we offer preparation courses – please see www.hull.ac.uk/efl for further details.

Economics and Business Economics

Postgraduate Taught

Economics offers fundamental insights that are essential for well-informed decisions by business and policy-makers in today's dynamic and highly interconnected world.

Our MSc in Economics and Business provides students with a thorough knowledge and understanding of the concepts, tools and methods of modern economics, along with key business applications, all informed by current scholarship and research.

You will advance your economic skills relevant to business through the study of economic principles and the analysis of economic and business data using quantitative methods, developing expertise which is highly sought-after in both the private and public sectors.

The heart of the programme is five core modules addressing the two disciplines alongside each other: Economics for Business; Statistical Analysis of Economic Data; The International Business Context; Regulation of Competition, Trade and Industry; and Current Issues in Business Economics.

These will develop your key professional and research skills, including an understanding of ethical business practice.

They are complemented by a choice of an optional module and a final three-month research project, which can be either a dissertation or a business-based project.

Postgraduate Research

Economics at Hull has a strong research culture and an established reputation in several fields, notably applied microeconomics, international economics, economic development, macroeconomics, and environmental economics.

We are committed to achieving world-leading and international standards of research excellence, and our active internal and external seminar programmes foster the overall research effort of staff.

Our experts in the Economics research group welcome applications for postgraduate study across a broad range of topics.

Key research areas include the impacts of micro and macroeconomic policies on growth, agricultural economics, environmental economics, applied economics, the economics of sport, labour economics, international and EU economics.

The Business School has a dedicated work room with cutting-edge facilities and a full range of professional business information services including Reuters Datastream, Reuters Thomson One, Bloomberg, Wharton Research Data Services, Bankscope and FAME.

As well as focusing on high quality publication in the core areas of economics, our experts support interdisciplinary research by providing an economics-based contribution to faculty and University-wide projects.



Postgraduate Taught

Course	Award / Level	Study Mode	Duration	IELTS*
MSc Economics and Business	MSc	FT	1 Year FT	6.0/5.5

Most postgraduate taught programmes start in September. Some courses also have January and June start dates - please contact us at global@hull.ac.uk for specific details.

Postgraduate Research

Subject Area	Award / Level	Study Mode	Duration	IELTS*
Economics and Business Economics	PhD	FT / PT	4 Years FT / 7 Years PT	6.0/5.5

Most postgraduate research degrees can start in September, January and June. Please contact us at international@hull.ac.uk.

*These are academic IELTS requirements and indicate 'overall/no less than in each skill' level. See www.hull.ac.uk for other acceptable English language qualifications. If you need to improve your English language skills to meet these entry requirements, we offer preparation courses - please see www.hull.ac.uk/efl for further details.

Education, Teaching and Childhood Studies



Postgraduate Taught

Our suite of Masters degrees gives teachers and other professionals the skills, knowledge and leadership qualities to make a real difference to the lives of children, young people and adults.

Our MA in Education is a flexible programme for those who want to extend their knowledge and understanding of current educational practices.

The MA in Education and Digital Technologies is ideal for teachers and support staff interested in the application of technologies in the classroom.

MA in Education and Early Childhood focuses on policies, services, development and pedagogy in early childhood education and care.

MA in Education and Leadership focuses on developing leadership skills, while the MA in Education, Inclusion and Special Needs investigates the complexities around inclusion and meeting the needs of all learners, focusing on those who might experience marginalisation in society.

And MA in Pedagogy and Practice enables students to develop existing qualifications or experience by focusing on a project they're passionate about.

We also have strong partnerships for initial teacher training and offer a wide range of PGCE programmes at postgraduate level.

Postgraduate Research

From technology-enhanced learning and theoretical perspectives on higher education to themes around leadership, policy, the experience of childhood and inclusivity, we have a strong tradition of supporting and developing researchers of national and international standing at Hull.

Students explore a range of current educational practice, looking at key issues and policy. Graduates leave with reflective and practical skills and the knowledge they need to contribute to their chosen learning community.

Our highly-experienced, research-active team supervises postgraduate students from around the world and research these have been successfully completed on a wide variety of subjects.

We offer a rich research environment with four sub-groups – Inclusion and Social Justice; Professional Identity, Partnership and Practice; Technology Enhanced Learning; and Early Years Education and Care – actively involved in a number of projects.

Postgraduate Taught

Course	Award / Level	Study Mode	Duration	IELTS*
MA Education	MA	FT / PT	1 Year FT / 2 Years PT	6.0/5.5
MA Education and Digital Technologies	MA	FT / PT	1 Year FT / 2 Years PT	6.0/5.5
MA Education and Early Childhood	MA	FT / PT	1 Year FT / 2 Years PT	6.0/5.5
MA Education and Leadership	MA	FT / PT	1 Year FT / 2 Years PT	6.0/5.5
MA Education, Inclusion and Special Needs	MA	FT / PT	1 Year FT / 2 Years PT	6.0/5.5
MA Pedagogy and Practice	MA	PT	Up To 5 Years PT	6.0/5.5

Most postgraduate taught programmes start in September. Some courses also have January and June start dates - please contact us at global@hull.ac.uk for specific details.

Postgraduate Research

Subject Area	Award / Level	Study Mode	Duration	IELTS*
Education, Teaching and Childhood Studies	MEd by Research	FT / PT	1 Year FT / 2 Years PT	6.0/5.5
Education	PhD	FT / PT	4 Years FT / 7 Years PT	6.0/5.5

Most postgraduate research degrees can start in September, January and June. Please contact us at international@hull.ac.uk.

*These are academic IELTS requirements and indicate 'overall/no less than in each skill' level. See www.hull.ac.uk for other acceptable English language qualifications. If you need to improve your English language skills to meet these entry requirements, we offer preparation courses – please see www.hull.ac.uk/efl for further details.

Electrical and Electronic Engineering

Postgraduate Taught

The Humber's emergence as Britain's 'energy estuary' has created a wealth of rewarding positions, opening up a world of career opportunities to specialists in the field.

Electrical, electronic and energy engineers are in high demand by employers, and our students enjoy excellent prospects.

Our suite of MSc programmes provide rational, flexibly structured and coherent programmes of postgraduate study.

You achieve a profound knowledge base in a wide area of engineering and develop wider skills in IT, communication, problem-solving, team working and task management.

Combining academic depth with current and emerging engineering practices, many projects are carried out in research groups or are linked to industry.

You'll be taught by research-active staff with years of experience and invaluable contacts in this industry which touches every aspect of 21st-century life.

Our MSc in Electrical and Electronic Engineering and our MSc in Energy Engineering are accredited by the Institution of Engineering and Technology (IET). These courses meet the academic criteria for registration as a Chartered Engineer.

Postgraduate Research

Engineering at Hull has a long history of research excellence with 75% of our research submissions judged 'world-leading' or 'internationally excellent' in the most recent national assessment (REF 2014).

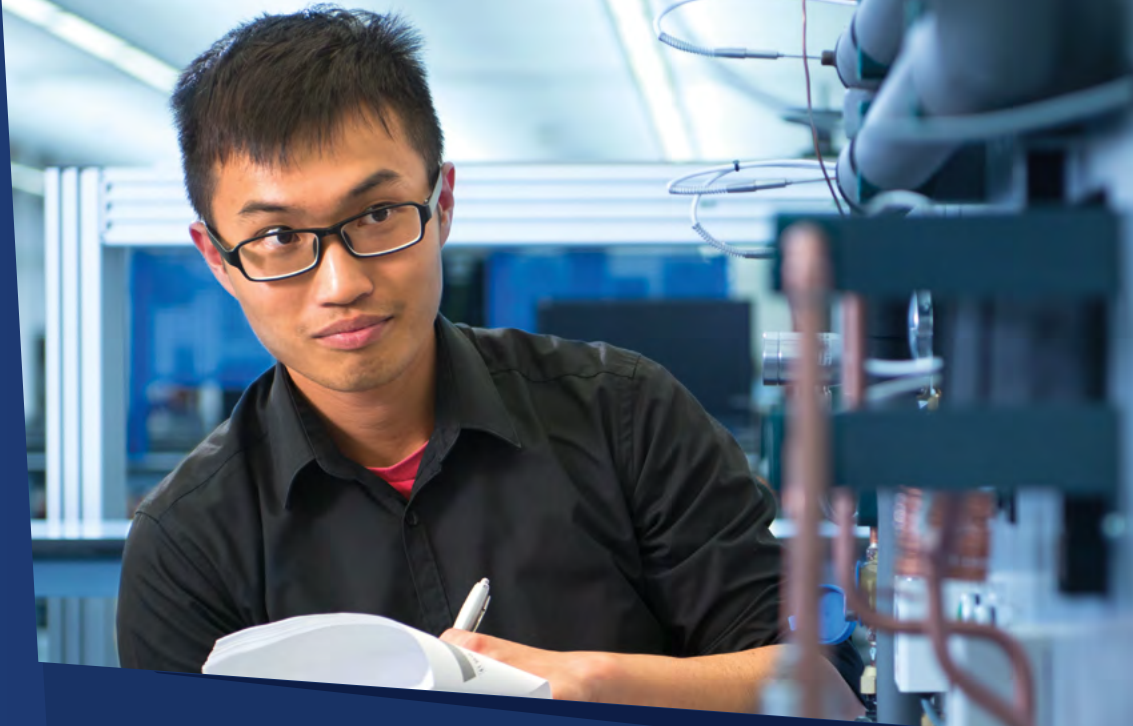
Our research addresses some of the biggest issues of modern times. Being part of a general engineering school, we can assemble a diverse and complementary range of expertise, experience and facilities to solve problems and change lives for the better.

Electrical and electronic engineering researchers work together with their counterparts in mechanical engineering, chemical engineering, biomedical engineering and energy engineering.

Our research interests are broadly themed around three key areas - energy and environment, medical engineering and sustainable engineering.

We welcome applications from potential graduate students who are interested in working with us for PhD, MPhil or MSc by Research. Our programmes prepare you for academic, research, and other high-level careers.

And with an estimated annual shortfall of 69,000 engineers and technicians in the UK engineering sector, your research degree is likely to put you in high demand from employers.



Postgraduate Taught

Course	Award / Level	Study Mode	Duration	IELTS*
MSc Electrical and Electronic Engineering	MSc	FT	1 Year FT	6.0/5.5
MSc Engineering Management	MSc	FT	1 Year FT	6.0/5.5
MSc Energy Engineering	MSc	FT	1 Year FT	6.0/5.5
MSc Public Engagement and Science Communication	MSc	FT	1 Year FT	6.5/6.0

Most postgraduate taught programmes start in September. Some courses also have January and June start dates - please contact us at global@hull.ac.uk for specific details.

Postgraduate Research

Subject Area	Award / Level	Study Mode	Duration	IELTS*
Electrical and Electronic Engineering	MSc by Research	FT / PT	1 Year FT / 2 Years PT	6.0/5.5
Electrical and Electronic Engineering	PhD	FT / PT	4 Years FT / 7 Years PT	6.0/5.5

Most postgraduate research degrees can start in September, January and June. Please contact us at international@hull.ac.uk.

*These are academic IELTS requirements and indicate 'overall/no less than in each skill' level. See www.hull.ac.uk for other acceptable English language qualifications. If you need to improve your English language skills to meet these entry requirements, we offer preparation courses - please see www.hull.ac.uk/efl for further details.

English

Postgraduate Taught

Where better to study English than the city described as the most poetic in England? And at the university where Philip Larkin was head librarian for 30 years and wrote much of his best work.

Our staff are internationally renowned while our wealth of cultural resources spans from the superbly-refurbished Brynmor Jones Library and Middleton Hall, to the Hull History Centre and the Larkin Centre.

English postgraduates at Hull gain insight into society, culture and politics by developing an understanding of the power of language.

Our MA in English (Creative Writing and English Literature) offers dedicated routes in both literary studies and creative writing. There are also designated pathways on medieval and Renaissance, 19th century, and modern and contemporary literature and culture.

You are taught by experts specialising in wide-ranging areas from Chaucer to the 21st century, including medieval literature and medievalism, Shakespeare and Renaissance drama, early modern literature and politics, 19th-century studies, modern and contemporary literature, genre fiction and creative writing.

Postgraduate Research

At Hull, you are supervised by internationally-renowned experts who work at the cutting edge of their disciplines, both literary and creative.

They have expertise in a wealth of literary periods and genres, from medieval to 21st century literature, and our postgraduate research students find that English is friendly, inclusive and supportive - characterised by the world-leading research that informs their supervision.

Postgraduate research students find that English at Hull is friendly, inclusive and supportive, and characterised by the world-leading research that informs their supervision.

Specialisms include medieval literature and medievalism, Shakespeare and Renaissance drama, early modern literature and politics, 19th-century studies, modern and contemporary literature, genre fiction and creative writing.

Our research encompasses author-centred work, archival studies and textual editing as well as interdisciplinary projects such as literature and the visual arts, literature and place, and theatre history.

Students benefit from the expertise and resources of our Andrew Marvell Centre for Medieval and Early Modern Studies, and the Centre for Nineteenth Century Studies.

We offer two research options for postgraduate students - MRes English (Literature and Creative Writing pathways) and PhD (English or Creative Writing).



Postgraduate Taught

Course	Award / Level	Study Mode	Duration	IELTS*
MA English (Creative Writing and English Literature)	MA	FT / PT	1 Year FT / 2 Years PT	6.0/5.5

Most postgraduate taught programmes start in September. Some courses also have January and June start dates - please contact us at global@hull.ac.uk for specific details.

Postgraduate Research

Subject Area	Award / Level	Study Mode	Duration	IELTS*
English	MA by Research	FT / PT	1 Year FT / 2 Years PT	6.0/5.5
MA English (Creative Writing and English Literature)	MRes	FT / PT	1 Year FT / 2 Years PT	6.0/5.5
English	PhD	FT / PT	4 Years FT / 7 Years PT	6.0/5.5

Most postgraduate research degrees can start in September, January and June. Please contact us at international@hull.ac.uk.

*These are academic IELTS requirements and indicate 'overall/no less than in each skill' level. See www.hull.ac.uk for other acceptable English language qualifications. If you need to improve your English language skills to meet these entry requirements, we offer preparation courses - please see www.hull.ac.uk/efl for further details.

Film and Digital Media

Postgraduate Taught

Our digital media students are taught by industry experts with experience in managing large team-based projects across Europe, directing live media events and delivering visual design solutions in the creative industries.

The facilities and equipment you will be using day-to-day include Apple Mac-based laboratories, professional software and digital media production facilities.

Our MA in Digital Media programme capitalises on sector needs by delivering graduates who understand the role that digital media plays across different business functions, including marketing, IT, and executive management.

You are encouraged to explore professionally-driven issues and concentrate on resolving complex scenarios, through creative problem solving.

Our programme enables you to understand how digital media can be used to effectively communicate ideas and how it can be used in larger challenges, such as those posed by “big data”.

Digital media is a valuable and growing sector encompassing a range of potential careers in areas including digital marketing, content production for the advertising and media industries, SEO, social media, content management, interactive products design and more.

Postgraduate Research

Our research is centred on the theme of digital creativity and covers topics as diverse as social media, e-learning, digital curation and human-computer interaction.

You will be guided by leading industry experts and have access to Apple Mac-based laboratories and professional software and digital media production facilities.

When it comes to film studies, applications for postgraduate research are welcomed across a broad range of topics, including television, Hollywood cinema, Disney and animation, and horror.

Our research degrees are supervised by academic experts who contribute to television and radio programmes on film, and have spoken at the National Film Theatre, and at universities in Europe and North America.

The University recently invested £9.5m on transforming Middleton Hall into a world class entertainment venue which includes one of the region’s most advanced cinemas with state-of-the-art surround sound.



Postgraduate Taught

Course	Award / Level	Study Mode	Duration	IELTS*
MA Digital Media	MA	FT / PT	1 Year FT / 2 Years PT	6.0/5.5

Most postgraduate taught programmes start in September. Some courses also have January and June start dates - please contact us at global@hull.ac.uk for specific details.

Postgraduate Research

Subject Area	Award / Level	Study Mode	Duration	IELTS*
Film Studies / Digital Media	PhD	FT / PT	4 Years FT / 7 Years PT	6.0/5.5

Most postgraduate research degrees can start in September, January and June. Please contact us at international@hull.ac.uk.

*These are academic IELTS requirements and indicate ‘overall/no less than in each skill’ level. See www.hull.ac.uk for other acceptable English language qualifications. If you need to improve your English language skills to meet these entry requirements, we offer preparation courses – please see www.hull.ac.uk/efl for further details.

Geography and Geology

Postgraduate Taught

Our MSc in Renewable Energy is one of the only Masters in the UK specifically designed to train you as a project manager or resource analyst for the renewables sector.

And with the Humber - Britain's 'Energy Estuary' - rapidly becoming the focus of Britain's renewables industry, you could hardly choose a better place to study than Hull.

As the renewable energy sector continues to grow there is a need for trained individuals to plan, implement and manage new renewable energy projects.

Developed in cooperation with industry experts, this vocational course delivers a good understanding of a range of technologies, including wind, tidal, solar and hydro-power.

You develop an understanding of the key research and analytical skills relevant to renewable energy resource analysis, including GIS and industry software, as well as learning key professional skills such as project management, presentations and group work.

There is a strong industrial component, including site visits, guest speakers from industry and the use of 'real-world' examples. The programme is also ideal for students interested in further research.

Postgraduate Research

Our postgraduate research students benefit from studying in one of the UK's leading centres for geography and geology.

Our internationally-renowned staff specialise in major issues, from globalisation and renewable energy to mass extinctions and climate change.

Our geography and environmental studies research is ranked third in the UK - and first in England - for its impact (Research Excellence Framework 2014) and renowned for its international scope and relevance across human and physical geography and geology.

Specialisms range from mass extinction research and simulating water and sediment flows on flood plains and Mars, to environmental policy and governance and mapping the historic connections between women's property ownership and status.

Whether you choose to study at PhD or Masters level, you will find that we combine research expertise and cutting-edge facilities to deliver a unique experience.



Postgraduate Taught

Course	Award / Level	Study Mode	Duration	IELTS*
MSc Renewable Energy	MSc	FT / PT	1 Year FT / 2 Years PT	6.0/5.5
MSc Public Engagement and Science Communication	MSc	FT / PT	1 Year FT	6.5/6.0

Most postgraduate taught programmes start in September. Some courses also have January and June start dates - please contact us at global@hull.ac.uk for specific details.

Postgraduate Research

Subject Area	Award / Level	Study Mode	Duration	IELTS*
Geography and Geology	MA by Research	FT / PT	1 Year FT / 2 Years PT	6.0/5.5
Geography and Geology	MSc by Research	FT / PT	1 Year FT / 2 Years PT	6.0/5.5
Geography and Geology	PhD	FT / PT	4 Years FT / 7 Years PT	6.0/5.5

Most postgraduate research degrees can start in September, January and June. Please contact us at international@hull.ac.uk.

*These are academic IELTS requirements and indicate 'overall/no less than in each skill' level. See www.hull.ac.uk for other acceptable English language qualifications. If you need to improve your English language skills to meet these entry requirements, we offer preparation courses - please see www.hull.ac.uk/efl for further details.

Health, Nursing and Midwifery

Postgraduate Taught

Cutting-edge new facilities, expert staff and close links with the NHS and other providers enable our students to develop the knowledge and skills to take their career or studies to the next level.

At Hull, students benefit from the amazing facilities of our new £28-million Health Campus with its simulated operating theatre, hospital ward and intensive care unit.

This phenomenal resource allows nurses, doctors and other healthcare practitioners to train, side by side, in a real-life environment.

Our postgraduate taught options prepare professionals to deliver safe and compassionate care underpinned by the latest research and evidence.

They include programmes for those interested in developing their skills and knowledge in a wide range of healthcare areas.

These include gastroenterology care, colonoscopy, advanced practice and midwifery, as well as specialist programmes for healthcare leaders and teachers. The flexible MSc in Health Studies can be tailored to suit all specialities.

Developed with our NHS and industrial partners, these programmes are designed to meet your professional development needs. They are constantly updated to reflect the very latest in health care provision.

Postgraduate Research

By choosing to research health, nursing or midwifery as a postgraduate at Hull you will be joining a vibrant and supportive research community.

Investment in our new Health Campus is increasing the University's capacity to deliver life-changing research and is attracting academic expertise from across the globe.

We have expert academic staff with diverse interests and methodological expertise in both qualitative and quantitative research.

They can offer high quality postgraduate research opportunities to suit a diverse range of professions across healthcare.

And the PhD Nursing and Health Studies is for students who wish to undertake a complex and original independent research project under the guidance of an experienced academic supervisor.



Postgraduate Taught

Course	Award / Level	Study Mode	Duration	IELTS*
MSc Health Studies	MSc/PGDip*	FT / PT	MSc 18 months FT / 3 years PT, PGDip 1 year FT	6.0/5.5
MSc Gastroenterology Care	MSc	FT / PT**	1 year FT / 2 years PT	6.0/5.5
MSc Colonoscopy	MSc	FT / PT	1 year FT / 2 years PT	6.0/5.5
MSc Leadership in Health and Social Care	MA / PGDip^/ PG Cert^	FT / PT	1 year FT / 2 years PT	6.0/5.5

*PGDip is FT and September only **PT is September only ^PGDip/PGCert is PT only

Most postgraduate taught programmes start in September. Some courses also have January and June start dates - please contact us at global@hull.ac.uk for specific details.

Postgraduate Research

Subject Area	Award / Level	Study Mode	Duration	IELTS*
Health, Nursing and Midwifery	PhD	FT / PT	4 Years FT / 7 Years PT	6.0/5.5

Most postgraduate research degrees can start in September, January and June. Please contact us at international@hull.ac.uk.

*These are academic IELTS requirements and indicate 'overall/no less than in each skill' level. See www.hull.ac.uk for other acceptable English language qualifications. If you need to improve your English language skills to meet these entry requirements, we offer preparation courses - please see www.hull.ac.uk/efl for further details.

History

Postgraduate Taught

History at Hull allows you to follow your interests in the social, cultural, art, indigenous, military, maritime and economic history of Britain, Europe and the wider world.

At postgraduate level, our MA in History uniquely combines period-specific and thematic modules to give you the confidence to take part in historical debate beyond your immediate specialism.

Widening your analytical lens, you will learn to 'ask better questions' that would matter just as much to a medievalist or a historian of the present.

You join the same community as our postgraduate research students and benefit from the direct supervision of our world-leading experts in historical research, as well as our specialists in American studies and modern languages.

The exceptional resources available at the University of Hull, and in our city and surrounding region, enable you to cultivate your own interests and strengths.

The Hull History Centre offers a treasure trove of archive material and our Maritime Historical Studies Centre is globally recognised.

Postgraduate Research

At Hull, you research history under the supervision and guidance of leading international experts who are active historians working on everything from ancient Rome to modern Britain.

We offer postgraduate research degrees, at both MRes and PhD levels, in a wide variety of historical subjects, genres, disciplines and methodologies.

History research at Hull ranges from Palaeolithic America to the contemporary Philippines, by way of modern Australia, India, the Middle East, and Britain and Europe from the early middle ages to the 21st century.

Thematic strengths include maritime, military, global, social, economic, environmental, cultural, intellectual and political history, as well as the history of slavery and of adaptive technologies.

Our research staff contribute to a range of research centres and units, including the Wilberforce Institute for the study of Slavery and Emancipation (WISE), the Maritime Historical Studies Centre, and the Andrew Marvell Centre.

The University of Hull is the lead partner for the Heritage Consortium of seven northern universities which was established in 2013, supported by the Arts and Humanities Research Council, to deliver doctoral training and promote research in all aspects of heritage.



Postgraduate Taught

Course	Award / Level	Study Mode	Duration	IELTS*
MA History	MA	FT / PT	1 Year FT / 2 Years PT	6.0/5.5

Most postgraduate taught programmes start in September. Some courses also have January and June start dates - please contact us at global@hull.ac.uk for specific details.

Postgraduate Research

Subject Area	Award / Level	Study Mode	Duration	IELTS*
History	MA by Research	FT / PT	1 Year FT / 2 Years PT	6.0/5.5
History	MRes	FT	1 Year FT	6.0/5.5
History	PhD	FT / PT	4 Years FT / 7 Years PT	6.0/5.5

Most postgraduate research degrees can start in September, January and June. Please contact us at international@hull.ac.uk.

*These are academic IELTS requirements and indicate 'overall/no less than in each skill' level. See www.hull.ac.uk for other acceptable English language qualifications. If you need to improve your English language skills to meet these entry requirements, we offer preparation courses - please see www.hull.ac.uk/efl for further details.

Law

Postgraduate Taught

Our LLM in International Law programmes give students the choice between two pathways - Conflict, Security and Human Rights, and Global Economy and Asia-Europe Trade and Investment.

LLM in International Law (Conflict, Security and Human Rights) provides the opportunity for in-depth study of the international legal response to some of the most serious perils facing humankind today.

The core focus is upon problems of increasing warfare and armed conflict and their implications for human rights, as well as the 'natural' problems which often fuel them.

You'll study the legal response to the global refugee crisis, the spread of terrorism, internal armed conflict, piracy, and human trafficking, as well as natural disasters, health pandemics and economic crises.

The LLM in International Law (Global Economy and Asia-Europe Trade and Investment) develops the concept of international law as a system to regulate the global economy.

You'll study the law that regulates global business and cross-border commerce, with reference to trade and investment relations between Asia and Europe.

This programme is among the first in the world to focus on Asia-Europe economic relations, and to make China's Belt and Road Initiative (B & R) a core element of study.

Postgraduate Research

At Hull, our postgraduate law researchers are guided by international experts in their respective fields.

We offer supervision on a range of legal issues including international economic law; public international law; human rights; maritime law; criminal justice; restorative justice, mediation and alternative dispute resolution; public law; and legal theory.

Postgraduate students are a fully integrated part of the school and our research students make an important contribution to our vibrant research culture.

You are supervised by at least two academic members of staff, and given research training and financial assistance to fund research trips and attend conferences. We also stage dedicated workshops, seminars and conferences for our PhD students.

Our research is used by many non-academic bodies and helps to shape public policy, professional practice and public understanding of legal issues.

Those who complete a PhD law degree at Hull go on to highly-successful careers in the legal profession, the commercial sector and academia.



Postgraduate Taught

Course	Award / Level	Study Mode	Duration	IELTS*
LLM International Law (Conflict, Security and Human Rights)	LLM	FT	1 Year FT	6.0/5.5
LLM International Law (Global Economy and Asia-Europe Trade and Investment)	LLM	FT	1 Year FT	6.0/5.5

Most postgraduate taught programmes start in September. Some courses also have January and June start dates - please contact us at global@hull.ac.uk for specific details.

Postgraduate Research

Subject Area	Award / Level	Study Mode	Duration	IELTS*
Law	PhD	FT / PT	4 Years FT / 7 Years PT	6.0/5.5

Most postgraduate research degrees can start in September, January and June. Please contact us at international@hull.ac.uk.

*These are academic IELTS requirements and indicate 'overall/no less than in each skill' level. See www.hull.ac.uk for other acceptable English language qualifications. If you need to improve your English language skills to meet these entry requirements, we offer preparation courses - please see www.hull.ac.uk/efl for further details.

Logistics and Supply Chain Management

Postgraduate Taught

With the Humber region home to one of Europe's busiest ports complex, Hull is the ideal location to study logistics and supply chain management.

Study under expert staff using latest generation IT tools and simulators in our world-class Logistics Institute.

Industry guest speakers and links to partners, such as the World Economic Forum, give our programmes real world relevance.

Our MSc programme has been accredited by the key professional bodies in logistics – the Chartered Institute of Logistics and Transport (CILT) and the Chartered Institute of Procurement and Supply (CIPS) – giving you a head start in this competitive field.

Programme content includes field trips, industry speakers and a strong practical and problem-solving element, delivered by staff recognised for cutting-edge research and translating industry best practices.

You will become familiar with the tools and techniques necessary to develop effective and efficient supply chains which deliver higher levels of value for the end user and facilitate sustainable business growth.

You also explore current theory and research, seeing how this informs practice, and develop innovative solutions to real-life logistics and supply chain problems.

Postgraduate Research

Postgraduate researchers in logistics and supply chain management benefit from the expertise and resources of our world-renowned Logistics Institute.

We offer PhD supervision across a broad range of research themes including supply chain security, port logistics, and sustainable supply chains.

Our postgraduate research students benefit from our strong relationships with industry, and from the expertise and experience of our staff.

The Logistics Institute was awarded a major contract by Green Port Hull (GPH) to provide an economic, social and environmental impact assessment of the massive Siemens Gamesa and ABP investment in the region.

It is also co-leading the Liverpool-Humber Optimisation of Freight Transport (LHOFT) project which will enable multiple cargo owners to pool volumes so they can reduce perceived risks associated with using new sea and rail services.

Our learning environment is an inspiring collection of Grade II listed buildings, seamlessly integrated with modern facilities to provide a wonderful place to study, complemented by ongoing investment in the latest business technologies and software.

Postgraduate Taught

Course	Award / Level	Study Mode	Duration	IELTS*
MSc Logistics and Supply Chain Management	MSc	FT	1 Year FT	6.0/5.5

Most postgraduate taught programmes start in September. Some courses also have January and June start dates - please contact us at global@hull.ac.uk for specific details.

Postgraduate Research

Subject Area	Award / Level	Study Mode	Duration	IELTS*
Logistics and Supply Chain Management	PhD	FT / PT	4 Years FT / 7 Years PT	6.0/5.5

Most postgraduate research degrees can start in September, January and June. Please contact us at international@hull.ac.uk.

*These are academic IELTS requirements and indicate 'overall/no less than in each skill' level. See www.hull.ac.uk for other acceptable English language qualifications. If you need to improve your English language skills to meet these entry requirements, we offer preparation courses – please see www.hull.ac.uk/efl for further details.

Marketing

Postgraduate Taught

Marketing at Hull gives you a strong foundation of core marketing skills as well as an insight into new trends.

Our Masters degrees can be studied without any prior knowledge, meaning they're a great way to step into a new career.

The MSc in Advertising and Marketing is designed to give students a competitive edge for a career in marketing, advertising or communications.

Accredited by the Chartered Institute of Marketing, it equips you with the skills to choose, design, implement and evaluate creative strategies for different audiences.

You get the chance to pitch ideas to creative agencies or businesses as part of live projects, and learn how to select the appropriate media channels for the best impact with different audiences.

Our accredited MSc in Marketing Management enables you to develop a deep understanding of the marketing manager's role in a truly international environment.

Students enhance their ability to function as part of a project team, developing the critical skills for strategic decision making in areas including market research, digital marketing and international marketing.

Postgraduate Research

Hull University Business School offers an inspirational research environment and boasts a dynamic team of academics with internationally-recognised expertise in a number of key areas of marketing.

We have become the go-to place for the latest thinking, recently hosting the prestigious Academy of Marketing conference in its 50th anniversary year.

With a strong focus on applied research that impacts both academics and practitioners, our vision is to conduct research that advances knowledge and thinking in marketing.

Our experts welcome applications for postgraduate research across a broad range of topics including electronic / mobile marketing and social media; services marketing including service evaluation; and ethical, social, non-profit and political marketing.

Other specialist themes include SMEs and B2B marketing; brand management and internal branding; corporate social responsibility; relationship marketing; and advertising and social media.

In addition to links with regional institutions, our research students benefit from our strong international connections and research collaborations.

Our cutting edge facilities include one of the country's finest university libraries and state-of-the-art computer suites with subscriptions to leading business software.



Postgraduate Taught

Course	Award / Level	Study Mode	Duration	IELTS*
MSc Advertising and Marketing	MSc	FT	1 Year FT	6.0/5.5
MSc Marketing Management	MSc	FT	1 Year FT	6.0/5.5

Most postgraduate taught programmes start in September. Some courses also have January and June start dates - please contact us at global@hull.ac.uk for specific details.

Postgraduate Research

Subject Area	Award / Level	Study Mode	Duration	IELTS*
Marketing	PhD	FT / PT	4 Years FT / 7 Years PT	6.0/5.5

Most postgraduate research degrees can start in September, January and June. Please contact us at international@hull.ac.uk.

*These are academic IELTS requirements and indicate 'overall/no less than in each skill' level. See www.hull.ac.uk for other acceptable English language qualifications. If you need to improve your English language skills to meet these entry requirements, we offer preparation courses - please see www.hull.ac.uk/efl for further details.

Mathematics

Postgraduate Taught

This new and exciting programme has been designed to develop advanced skills in pure mathematics, applied mathematics, and probability and statistics.

Class sizes are small, so the MSc at Hull will feel much more personal and tailored in contrast with what other universities can provide.

You can choose between focusing on one or two key areas of advanced mathematics or keeping your studies more general.

You'll participate in a series of graduate seminars, where advanced mathematical topics of your choice are presented and discussed with your peers. These seminars help you develop professional presentation skills and boost your employability.

The final project will give you a taste of cutting-edge research as you work closely with academics who are experts in their fields, including algebra, fluid mechanics, cosmology, statistics and scientific computing.

You'll have access to the University's VIPER supercomputer – one of the most powerful in the north of England.

The MSc gives a solid foundation for students going on to careers requiring a strong mathematical base. It also provides an ideal stepping stone towards studying for a PhD.

Postgraduate Research

Mathematics at Hull offers opportunities to study towards a PhD in a thriving research environment.

Our staff have a wide range of expertise in many different areas, from pure maths theories around low-dimensional topology and asymptotic geometric analysis, to fluid dynamics, superstring theory and astrophysics across other disciplines.

While studying towards a PhD at Hull, you'll be fully supported by two supervisors who are able to offer expert supervision in your area, and you'll also benefit from being part of a genuine community of mathematicians.

We welcome research proposals in any of our specialisms which broadly come within the themes of pure mathematics, applied mathematics, and probability and statistics.

Our work in pure mathematics centres on asymptotic geometric analysis and low-dimensional topology; our applied mathematics focuses on environmental and industrial modelling, fluid dynamics, and superstring theory; while our probability and statistics research looks at foundations of statistics and statistics in astrophysics.

You benefit from the interdisciplinary way that our mathematical researchers work with experts from other disciplines to find answers to fundamental questions.



Postgraduate Taught

Subject Area	Award / Level	Study Mode	Duration	IELTS*
Mathematics	MSc	FT	1 Year FT	6.0/5.5

Most postgraduate taught programmes start in September. Some courses also have January and June start dates. Please email pgstudy@hull.ac.uk to find out more.

Postgraduate Research

Subject Area	Award / Level	Study Mode	Duration	IELTS*
Mathematics	PhD	FT / PT	4 Years FT	6.0/5.5

Most postgraduate research degrees can start in September, January and June. Please contact us at international@hull.ac.uk.

*These are academic IELTS requirements and indicate 'overall/no less than in each skill' level. See www.hull.ac.uk for other acceptable English language qualifications. If you need to improve your English language skills to meet these entry requirements, we offer preparation courses – please see www.hull.ac.uk/efl for further details.

Mechanical Engineering

Postgraduate Taught

At Hull, postgraduate students are instructed by leading engineers - equipping you with the advanced knowledge and skills for a successful career.

The University is in an area with a vibrant and growing industry, hosting major players in the aerospace, chemical, engineering design, pharmaceutical, transport, marine and energy industries.

Our MSc in Mechanical Engineering enables you to develop in-depth knowledge, comprehension and understanding of theoretical and practical applications of mechanical engineering.

The MSc in Energy Engineering prepares you for specialised industry roles in energy engineering or allows you to advance to specialist PhD study in energy and sustainability engineering.

There are two pathways, specialising in either energy technologies in buildings or renewable energy technologies.

And our MSc in Engineering Management provides in-depth strategic knowledge for graduates from all engineering disciplines who aspire to senior management roles.

Our MSc Mechanical Engineering is accredited by the Institution of Engineering and Technology (IET) and the Institution of Mechanical Engineers (IMechE). The MSc Energy Engineering is accredited by the IET. These courses meet the academic criteria for registration as a Chartered Engineer.

Postgraduate Research

Postgraduate researchers in mechanical engineering are guided by world-leading experts as part of a vibrant research community at Hull.

Our research addresses some of the most challenging and complex issues of modern times which require a multidisciplinary approach.

Being part of a general engineering school, we can assemble a diverse and complementary range of expertise, experience and facilities to solve problems and change lives for the better.

These encompass electrical and electronic engineering, chemical engineering, biomedical engineering and energy engineering, as well as mechanical engineering.

We have a long history of excellence in research and in the application of research to address real world problems.

In the latest Research Excellence Framework (REF 2014), 99% of our submissions were judged to be 'internationally recognised', with 75% classed as 'world-leading' or 'internationally excellent'.

Our research interests are broadly themed around three key areas - energy and environment, medical engineering and sustainable engineering.



Postgraduate Taught

Course	Award / Level	Study Mode	Duration	IELTS*
MSc Mechanical Engineering	MSc	FT	1 Year FT	6.0/5.5
MSc Energy Engineering	MSc	FT	1 Year FT	6.0/5.5
MSc Engineering Management	MSc	FT	1 Year FT	6.0/5.5
MSc Public Engagement and Science Communication	MSc	FT	1 Year FT	6.5/6.0

Most postgraduate taught programmes start in September. Some courses also have January and June start dates - please contact us at global@hull.ac.uk for specific details.

Postgraduate Research

Subject Area	Award / Level	Study Mode	Duration	IELTS*
Mechanical Engineering	MSc by Research	FT / PT	1 Year FT / 2 Years PT	6.0/5.5
Mechanical Engineering	PhD	FT / PT	4 Years FT / 7 Years PT	6.0/5.5

Most postgraduate research degrees can start in September, January and June. Please contact us at international@hull.ac.uk.

*These are academic IELTS requirements and indicate 'overall/no less than in each skill' level. See www.hull.ac.uk for other acceptable English language qualifications. If you need to improve your English language skills to meet these entry requirements, we offer preparation courses - please see www.hull.ac.uk/efl for further details.

Medical and Biomedical Engineering

Postgraduate Taught

Our internationally-recognised experts work alongside experienced engineers and NHS clinicians from local hospitals to deliver our MSc in Biomedical Engineering.

This flexible programme will help you develop the skills to break down complex problems and develop the solutions needed by patients and wanted by industry.

We cover every step in the process of designing a medical device from concept design and material selection, through analysis and optimisation, to regulatory approval.

We have first hand practical experience of medical device development and we will mentor you as you develop your own ideas.

You gain valuable experience of working with either the NHS or other relevant industries as we have built strong partnerships to drive forward innovation and excellence.

You have access to cutting edge facilities including up-to-the minute biomaterials, biomechanics and physiological measurement testing equipment as well as scanning technology including CT, ultrasound and laser.

Our MSc in Biomedical Engineering is accredited by the Institute of Physics and Engineering in Medicine (IPEM), the Institution of Mechanical Engineers (IMechE) and the Institution of Engineering and Technology (IET). This course meets the academic criteria for registration as a Chartered Engineer.

Postgraduate Research

Many of the most important breakthroughs in medicine and healthcare over the past century have critically relied on the contribution of engineers.

With increasing pressure for more effective, affordable and accessible healthcare, opportunities in the field of biomedical engineering look certain to increase.

Many will be driven by new materials and technologies, including tissue engineering, regenerative medicine, new imaging modalities and new integrated computational approaches.

At Hull, our current activities include research into the musculoskeletal system, the development of new medical devices and biomedical materials, and new diagnostic and analytical systems.

We are committed to making important breakthroughs, as evidenced by our development of a speech valve to restore speech in patients who have had a laryngectomy.

Our research addresses some of the most challenging and complex issues of modern times which often require a multidisciplinary approach.

Being part of a general engineering school, we can assemble a diverse and complementary range of expertise, experience and facilities to solve problems and change lives for the better.



Postgraduate Taught

Course	Award / Level	Study Mode	Duration	IELTS*
MSc in Biomedical Engineering	MSc	FT	1 Year FT	6.0/5.5
MSc Engineering Management	MSc	FT	1 Year FT	6.0/5.5
MSc Public Engagement and Science Communication	MSc	FT	1 Year FT	6.5/6.0

Most postgraduate taught programmes start in September. Some courses also have January and June start dates - please contact us at global@hull.ac.uk for specific details.

Postgraduate Research

Subject Area	Award / Level	Study Mode	Duration	IELTS*
Medical and Biomedical Engineering	MSc by Research	FT / PT	1 Year FT / 2 Years PT	6.0/5.5
Medical and Biomedical Engineering	PhD	FT / PT	4 Years FT / 7 Years PT	6.0/5.5

Most postgraduate research degrees can start in September, January and June. Please contact us at international@hull.ac.uk.

*These are academic IELTS requirements and indicate 'overall/no less than in each skill' level. See www.hull.ac.uk for other acceptable English language qualifications. If you need to improve your English language skills to meet these entry requirements, we offer preparation courses - please see www.hull.ac.uk/efl for further details.



Medicine

Postgraduate Taught

Medical programmes here are studied at Hull York Medical School – a partnership between the Universities of Hull and York.

The school operates across both University campuses as well as with NHS trusts, GP surgeries and community healthcare providers across the Yorkshire region.

You will be welcomed into a vibrant and supportive community of experts, clinicians and researchers who will encourage you to think independently and critically.

Students also benefit from our new £28 million Health Campus which boasts some of the country's leading medical teaching facilities including simulated operating theatres, hospital wards and intensive care facilities.

Graduates from our postgraduate programmes leave with the knowledge and skills needed to meet the challenges posed by their future careers as practising health professionals, educators or specialists in clinical or human anatomy.

We also offer an MSc in Physician Associate Studies for those interested in this new healthcare role which supports doctors and other healthcare professionals in the diagnosis and management of patients.

Postgraduate Research

Research plays a vital role in medicine, underpinning advances across the spectrum of healthcare from clinical trials to identifying new drugs in the fight against major diseases.

Investment in our new Health Campus is increasing the University's capacity to deliver life-changing research and attracting academic expertise from across the UK and beyond.

Our researchers have made a real impact, working on projects to enable early cancer detection and help people with life-limiting illnesses, as well as pioneering ways to better treat respiratory diseases including asthma, bronchitis and chronic cough.

Specialisms include anatomical and human sciences; cardiovascular and metabolic research; education, health and population sciences; immunology and infection; neuroscience; and cancer studies.

Our new Institute for Clinical and Applied Health Research brings together health professionals to collaborate on a range of research methods and fields including trials, epidemiology and health economics.

And our Wolfson Palliative Care Research Centre is helping people with life limiting illnesses live as well as they can, and, when the time comes, die with courage and dignity.



Postgraduate Taught

Course	Award / Level	Study Mode	Duration	IELTS*
MSc Health Professions Education	MSc / PG Dip / PG Cert	FT / PT	1 Year FT / 2-3 Years PT	7.0/5.5
MSc Clinical Anatomy	MSc	FT / PT	1 Year FT / 2-3 Years PT	6.5/6.0
MSc Clinical Anatomy and Education	MSc	FT / PT	1 Year FT / 2-3 Years PT	6.5/6.0
MSc Human Anatomy and Evolution	MSc	FT / PT	1 Year FT / 2-3 Years PT	7.0/5.5
MSc Physician Associate Studies	MSc	FT	2 Years FT	7.5/7.0

Most postgraduate taught programmes start in September. Some courses also have January and June start dates. Apply to Hull York Medical School for all postgraduate programmes in Medicine. Please contact us at pgtadmissions@hyms.ac.uk for specific details.

Postgraduate Research

Subject Area	Award / Level	Study Mode	Duration	IELTS*
Medicine	MSc	FT / PT	1 Year FT / 2 Years PT	6.0/5.5
Medicine	MD	FT	2 Years FT	6.0/5.5
Medicine	PhD	FT / PT	3 Years FT / 6 Years PT	6.0/5.5

Most postgraduate research degrees can start in September, January and June. Apply to Hull York Medical School for all postgraduate programmes in Medicine. Please contact us at pgtadmissions@hyms.ac.uk for specific details.

*These are academic IELTS requirements and indicate 'overall/no less than in each skill' level. Email postgraduate@hyms.ac.uk for details of any other acceptable English language qualifications. If you need to improve your English language skills to meet these entry requirements, we offer preparation courses – please see www.hull.ac.uk/efl for further details.

Modern Languages and Cultures

Postgraduate Taught

We offer MA programmes in Translation Studies, Translation Studies with TESOL and TESOL with Translation Studies - allowing you to focus on either discipline or combine them.

The translation studies components of these multidisciplinary programmes build on skills acquired in undergraduate degree courses and / or employment in the language industries.

They are intended to provide new avenues of thought while providing a firm foundation in the discipline of translation studies.

TESOL (teaching English to speakers of other languages) enables students to acquire an in-depth knowledge of English and how to teach it, and to explore new developments in language teaching.

We are one of only 11 universities in the UK to be accredited with membership of the prestigious European Commission European Masters in Translation (EMT) network.

Students enjoy 24/7 access to the Shoosmith Language Learning Centre, on the second floor of the Brynmor Jones Library, at the heart of the campus.

Postgraduate Research

You don't just become fluent in another language at Hull - you immerse yourself in the culture of the people who speak it.

We offer unique opportunities for research supervision in a wide variety of subjects, both at MRes and PhD level, in language learning and teaching including English language and linguistics, Chinese, French, German, Hispanic, and Italian studies.

When it comes to the area of translation studies we welcome both theoretical and practice-led projects.

Our areas of expertise include comparative literature, cultural history, cultural studies, popular cultural (including popular music), art and visual cultures, film studies, gender and postcolonial studies (including from a translation studies perspective), literary translation, discourse analysis, applied language and linguistics.

All of our postgraduate students can take advantage of the University's language learning advisors and the facilities of the Shoosmith Language Learning Centre, in the Brynmor Jones Library.



Postgraduate Taught

Course	Award / Level	Study Mode	Duration	IELTS*
MA in Translation Studies	MA	FT / PT	1 Year FT / 2 Years PT	6.0/5.5
MA in Translation Studies with TESOL	MA	FT / PT	1 Year FT / 2 Years PT	6.0/5.5
MA in TESOL	MA	FT / PT	1 Year FT / 2 Years PT	6.0/5.5
MA in TESOL with Translation Studies	MA	FT / PT	1 Year FT / 2 Years PT	6.5 /6.0

Most postgraduate taught programmes start in September. Some courses also have January and June start dates - please contact us at global@hull.ac.uk for specific details.

Postgraduate Research

Subject Area	Award / Level	Study Mode	Duration	IELTS
Modern Languages and Cultures	MRes	FT / PT	1 Year FT / 2 Years PT	6.0/5.5
Modern Languages and Cultures	PhD	FT / PT	4 Years FT / 7 Years PT	6.0/5.5

Most postgraduate research degrees can start in September, January and June. Please contact us at international@hull.ac.uk.

*These are academic IELTS requirements and indicate 'overall/no less than in each skill' level. See www.hull.ac.uk for other acceptable English language qualifications. If you need to improve your English language skills to meet these entry requirements, we offer preparation courses - please see www.hull.ac.uk/efl for further details.

Music

Postgraduate Taught

At Hull, you can become the musician you want to be, tailoring your course to match your interests.

With a superb array of musical instruments, rehearsal facilities, recording equipment and software at your disposal, you'll have the opportunity to develop specialist skills in different areas of music, including performance, composition, technology and musicology.

You'll get to be creative in some of the best music facilities of any UK university, thanks to a recent £9.5 million investment in Middleton Hall.

Play on the stage of a 400-seat concert hall, produce in an industry-standard recording suite, compose new soundscapes in our ambisonic studio, and enjoy 24/7 access to rehearsal facilities. You could even set up your own record label.

Our staff are experts and active practitioners in a variety of musical disciplines. From session musicians to composers, they deliver a unique perspective on current trends in musical thinking.

Extra-curricular opportunities include staff-and student-led ensembles, as well as workshops, collaborative projects and master classes with professionals, through our links with Opera North, the BBC, the Royal Philharmonic Orchestra and a wide range of national bands and jazz ensembles.

Postgraduate Research

Music at Hull has a long-standing history of world-leading research in a variety of areas including popular music, jazz studies, sonic arts and music psychology.

We offer a range of research degrees that have been designed to be flexible to enable you to pursue your chosen specialism in a supportive and productive environment.

Our staff are active researchers, so you can access wide-ranging expertise quickly and easily. Our areas of expertise include a wide array of specialisms within the general areas of musicology, contemporary music practice, and music science and technology.

We host a varied and vibrant programme of public performances every year and contribute regularly to musical events in the region, including Early Music festivals, jazz festivals and community projects.

Our team includes leading experts in film music, the music of Japan, jazz studies, groovology, music psychology and education, studio production, performance, electroacoustic and acoustic composition, as well as historical, critical and analytical musicology.

We also run the prestigious Newland Lectures in which renowned international academics, composers and music industry figures discuss their work in detail.



Postgraduate Taught

Course	Award / Level	Study Mode	Duration	IELTS*
MMus Music (pathways: Musicology; Composition; Performance & Technology)	MMus	FT / PT	1 Year FT / 2 Years PT	6.0/5.5

Most postgraduate taught programmes start in September. Some courses also have January and June start dates - please contact us at global@hull.ac.uk for specific details.

Postgraduate Research

Subject Area	Award / Level	Study Mode	Duration	IELTS*
Music	PhD	FT / PT	4 Years FT / 7 Years PT	6.0/5.5

Most postgraduate research degrees can start in September, January and June. Please contact us at international@hull.ac.uk.

*These are academic IELTS requirements and indicate 'overall/no less than in each skill' level. See www.hull.ac.uk for other acceptable English language qualifications. If you need to improve your English language skills to meet these entry requirements, we offer preparation courses - please see www.hull.ac.uk/efl for further details.

Philosophy

Postgraduate Research

Studying philosophy at Hull means 'doing' philosophy, engaging with global challenges in the modern world while developing skills in analytical and critical thinking.

You'll debate the issues of the day, from cutting-edge genetics to artificial intelligence. And you'll be encouraged to apply your knowledge to real-world problems.

Philosophy has been taught at Hull since we first opened our doors in 1927. Our research-active staff enable students to shape their own skills in analytical thinking and critical debate, as well as developing intellectual integrity.

Our research covers an unusually rich variety of areas - from Plato to Nietzsche, through to contemporary aesthetics, gender theory and moral philosophy.

In applied philosophy, focal areas include ethics, education and health. Our interests span many traditions and diverse approaches to philosophical issues.

Students also have the opportunity to take part in fortnightly debates, honing their intellectual arguments with fellow students, academic staff, external speakers and invited experts.



Postgraduate Research

Subject Area	Award / Level	Study Mode	Duration	IELTS*
Philosophy	PhD	FT / PT	4 Years FT / 7 Years PT	6.0/5.5

Most postgraduate research degrees can start in September, January and June. Please contact us at international@hull.ac.uk.

*These are academic IELTS requirements and indicate 'overall/no less than in each skill' level. See www.hull.ac.uk for other acceptable English language qualifications. If you need to improve your English language skills to meet these entry requirements, we offer preparation courses - please see www.hull.ac.uk/efl for further details.

Physics and Astrophysics

Postgraduate Research

There are a galaxy of reasons to research physics and astrophysics at the University of Hull.

Our expert staff's research interests range from the very small (quantum theory) to the very large (galaxy evolution). In between, we carry out specialist work in condensed matter physics, organophotonics, nanophysics and light-matter interactions.

You'll have access to Viper – one of the most powerful supercomputers in the north of England - to help you tackle the big unanswered questions.

Physics offers a range of postgraduate study options at MSc and PhD level, both full and part-time.

Our own research is funded from a range of sources, including the Engineering and Physical Sciences Research Council, the Royal Society, government and industrial establishments.

We have well-established links with a number of industrial companies and research centres with whom we conduct collaborative research.

Our work also benefits from strong interdisciplinary links within the university and with other groups at national and international level.



Postgraduate Research

Subject Area	Award / Level	Study Mode	Duration	IELTS*
Physics and Astrophysics	MSc by Research	FT / PT	1 Year FT / 2 Years PT	6.0/5.5
Physics and Astrophysics	PhD	FT / PT	4 Years FT / 7 Years PT	6.0/5.5

Most postgraduate research degrees can start in September, January and June. Please contact us at international@hull.ac.uk.

*These are academic IELTS requirements and indicate 'overall/no less than in each skill' level. See www.hull.ac.uk for other acceptable English language qualifications. If you need to improve your English language skills to meet these entry requirements, we offer preparation courses – please see www.hull.ac.uk/efl for further details.

Politics and International Studies

Postgraduate Taught

Our graduates are so numerous among the consultants, researchers and civil servants of Westminster and Whitehall, they have become known as the ‘Hull Mafia’.

Our postgraduate programmes place great emphasis on training students to design and conduct their own research projects, while receiving expert guidance from their supervisors.

Our MA in International Politics allows students to develop a broad and balanced understanding of international politics at an advanced level.

It provides core training in political analysis, examines contemporary global problems and considers rival approaches to their solutions.

The programme also offers specialisation in particular areas such as inter-state relations, international institutions, international ethics, and the issues of power involved in global development.

Our MA in Strategy and International Security explores how war, although defined by violence, is a rational tool of policy.

This degree covers theory and practice of strategy including land, sea and air power; terrorism and insurgency; nuclear strategy; technology and war; and ethics.

This is tested against historical and contemporary case studies, which include Alexander the Great, Napoleon, the First and Second World Wars, Vietnam, and the wars in Syria and elsewhere.

Postgraduate Research

Politics and international studies at the University of Hull is recognised globally as contributing to the cutting-edge of research.

Our internationally-recognised staff include leading political scientists, social and political theorists, and historians.

They are at the forefront of politics research, with our expertise and our interdisciplinary approach setting us apart.

Our work has impacted on legislation and social issues, including foreign policy, parliamentary procedures and debates, public policy, professional standards and economic models.

Specialisms include international politics, security studies, the European Union, legislative studies, applied political theory and ethics, political economy, British government, and the Middle East.

International and interdisciplinary research projects and collaborations are regularly undertaken and staff members are supported to build upon the existing expertise within the school.

Facilities include the £28-million Brynmor Jones Library, a state-of-the-art learning space with more than a million texts and 350 open-access PCs, that’s open 24/7.



Postgraduate Taught

Course	Award / Level	Study Mode	Duration	IELTS*
MA International Politics	MA	FT	1 Year FT	6.0/5.5
MA Strategy and International Security	MA	FT	1 Year FT	6.0/5.5

Most postgraduate taught programmes start in September. Some courses also have January and June start dates - please contact us at global@hull.ac.uk for specific details.

Postgraduate Research

Subject Area	Award / Level	Study Mode	Duration	IELTS*
Politics and International Studies	PhD	FT / PT	4 Years FT / 7 Years PT	6.0/5.5

Most postgraduate research degrees can start in September, January and June. Please contact us at international@hull.ac.uk.

*These are academic IELTS requirements and indicate ‘overall/no less than in each skill’ level. See www.hull.ac.uk for other acceptable English language qualifications. If you need to improve your English language skills to meet these entry requirements, we offer preparation courses – please see www.hull.ac.uk/efl for further details.

Psychology

Postgraduate Taught

Develop practical and technical skills under professional psychologists and learn how to use specialist techniques and equipment in our state-of-the-art labs.

Our MSc in Clinical Applications of Psychology is designed to meet a local and national need for more mental health practitioners and paves the way for students to train as chartered health psychologists.

It offers an advanced grounding in the psychology of adult mental health and is enriched by our close working relationships with the Hull Clinical Psychology Training Programme, and with local health and social care services.

Our cutting edge facilities include electroencephalography (EEG) for measuring activity in the brain, a brain stimulation laboratory, an eye-tracking laboratory, an audiometric laboratory and much more.

Postgraduate Research

Psychology at Hull has a strong and consistent research record. In the last national assessment (REF2014), 70% of our research was rated as 'world leading' or 'internationally excellent'.

Our work investigates a broad range of psychological processes from the measurement of brain activity to the investigation of individual and group behaviour, from infancy to old age.

This research makes a difference in the real world and influences policy and practice in education, sport and the workplace.

We are a large and diverse department that can offer project supervision in many areas of psychology.

Our own research is centred on three main themes - cognition; cognitive and clinical neuroscience; and health and applied psychology.

Facilities include electroencephalography (EEG) for measuring activity in the brain, a brain stimulation laboratory, an eye-tracking laboratory, an audiometric laboratory and much more.

Psychology at Hull is part of the Faculty of Life Sciences, which also includes sport and exercise science, and biomedical sciences, and our students also benefit from interdisciplinary research groups.

These include, for example, 'exercise, health and sports psychology' and 'psychology, wellbeing and mental health'.

Postgraduate Taught

Course	Award / Level	Study Mode	Duration	IELTS*
MSc Clinical Applications of Psychology**	MSc	FT	1 Year FT	6.0/5.5

Most postgraduate taught programmes start in September. Some courses also have January and June start dates - please contact us at global@hull.ac.uk for specific details.

****Places are limited, apply as soon as possible**

Postgraduate Research

Subject Area	Award / Level	Study Mode	Duration	IELTS*
Psychology	MSc by Research	FT / PT	1 Year FT	6.0/5.5
Psychology	MRes	FT	1 Year FT	6.0/5.5
Psychology	PhD	FT / PT	4 Years FT / 7 Years PT	6.0/5.5

Most postgraduate research degrees can start in September, January and June. Please contact us at international@hull.ac.uk.

*These are academic IELTS requirements and indicate 'overall/no less than in each skill' level. See www.hull.ac.uk for other acceptable English language qualifications. If you need to improve your English language skills to meet these entry requirements, we offer preparation courses - please see www.hull.ac.uk/efl for further details.

Social Work, Youth and Community Development

Postgraduate Taught

Hull ranks among Britain's top providers of social work education and our expert staff are committed to training you to the highest intellectual and professional standards.

The MA in Social Work enables students to develop an advanced understanding of social work skills, knowledge and values, and benefit from real-world experience to prepare for careers as confident and compassionate professionals.

This innovative and challenging two-year programme has been validated by the HCPC (Health and Care Professions Council) so those who successfully complete it are eligible to apply to register as qualified social workers.

The programme enjoys strong relationships with service users and carers, as well as a range of statutory and voluntary agencies.

This means you will experience high quality placements, offering excellent learning opportunities and support, in statutory, private and voluntary agencies.

Previously students have worked in local authority social work teams, NHS mental health units, youth offending teams and local charities.

The University of Hull is one of the founding members of the Humber Social Work Teaching Partnership, which includes the biggest employers of social work practitioners in the area.

Postgraduate Research

Our postgraduate research students share our passion and drive to make tangible difference to the lives of others.

With its diverse environments, experiences and social conditions, the Hull area is rich with opportunities for research in social work, youth work and community development.

The PhD in Social Work allows hand-selected students to carry out in-depth research within our research theme of health, well-being and social inclusion.

This encompasses work which theorises notions of health, illness and wellbeing, integrated with empirical studies and evaluations of health, social work and social care provision.

Recent research centres on issues including safeguarding and suicide-prevention in the internet age, kinship care, child protection and missing children.

You benefit from the University's strong working relationships with local social services providers, users and carers.



Postgraduate Taught

Course	Award / Level	Study Mode	Duration	IELTS*
MA Social Work**	MA	FT	2 Years FT	7.5/7.0

****Apply through UCAS**

Most postgraduate taught programmes start in September. Some courses also have January and June start dates - please contact us at global@hull.ac.uk for specific details.

Postgraduate Research

Subject Area	Award / Level	Study Mode	Duration	IELTS*
Social Work, Youth and Community Development	PhD	FT / PT	4 Years FT / 7 Years PT	6.0/5.5

Most postgraduate research degrees can start in September, January and June. Please contact us at international@hull.ac.uk.

*These are academic IELTS requirements and indicate 'overall/no less than in each skill' level. See www.hull.ac.uk for other acceptable English language qualifications. If you need to improve your English language skills to meet these entry requirements, we offer preparation courses - please see www.hull.ac.uk/efl for further details.

Sociology and Social Sciences

Postgraduate Taught

Our Masters programme in Social Research aims to create highly sought-after researchers ready to apply their advanced knowledge and practical skills in the workplace or on further research.

You learn how to collect, analyse and interpret social data and become skilled in interview techniques, surveys, problem-solving, communication skills and the latest industry software.

Students examine issues from across the social sciences and are introduced to both quantitative and qualitative research methods.

You research real world issues such as evaluating local health care services, predicting voting behaviour in elections or researching the impact of Hull's year as the UK City of Culture on local people.

Taught by experienced researchers, the programme was designed with input from industry experts, former students and leading academics to ensure that it means the demands of the modern social research industry.

Postgraduate Research

Social science research at Hull is focused on creating a positive impact on the real life conditions and experiences of individuals and communities at local, national and global levels.

Our work has contributed to the renowned Global Slavery Index which charts the scale of contemporary slavery, and has affected policy changes at all level.

We encourage and develop innovative yet pragmatic approaches to research which means actively encouraging involvement from both academic and non-academic users.

This ensures our research benefits users of health and social care and those working in voluntary and community organisations, as well as policy makers and public sector professionals.

We offer PhDs in media, culture and society; gender studies; social policy; sociology and anthropology; and social justice.

Our theology research brings together social scientists and leading thinkers in the arts and humanities from across the University and beyond.



Postgraduate Taught

Course	Award / Level	Study Mode	Duration	IELTS*
MSc Social Research	MSc	FT / PT	1 Year FT / 2 Years PT	6.0/5.5
MSc Social Research (Doctoral Training Pathway)	MSc	FT / PT	1 Year FT / 2 Years PT	6.0/5.5

Most postgraduate taught programmes start in September. Some courses also have January and June start dates - please contact us at global@hull.ac.uk for specific details.

Postgraduate Research

Subject Area	Award / Level	Study Mode	Duration	IELTS*
Sociology and Social Sciences/ Theology	PhD	FT / PT	4 Years FT / 7 Years PT	6.0/5.5

Most postgraduate research degrees can start in September, January and June. Please contact us at international@hull.ac.uk.

*These are academic IELTS requirements and indicate 'overall/no less than in each skill' level. See www.hull.ac.uk for other acceptable English language qualifications. If you need to improve your English language skills to meet these entry requirements, we offer preparation courses - please see www.hull.ac.uk/efl for further details.

Sport, Health and Exercise Science

Postgraduate Taught

Raise your game and go further studying under internationally-recognised experts in state-of-the-art facilities currently being upgraded in a £16-million investment.

Our students work with professional sports teams and elite athletes, as well as with NHS patients wanting to better their health.

Cutting edge facilities includes our £1.5-million Health and Human Performance Lab which boasts the sector's latest and most innovative technology.

And we're creating new resources including a 120-station fitness suite, a 12-court sports centre and the region's only 3G artificial pitch to meet international standards for both football and rugby.

Our postgraduate programmes includes the MSc in Cancer Rehabilitation which provides training and education for current healthcare professionals, or those aspiring to work in this fast evolving field.

The MSc in Cardiovascular Rehabilitation was developed with the British Association of Cardiovascular Prevention and Rehabilitation, for existing and potential healthcare professionals.

And our MSc in Clinical Exercise Physiology offers students the chance to develop extensive laboratory skills and gain an understanding of the science behind this emerging discipline.

Postgraduate Research

Our research expertise is illustrated by our collaboration on major projects with the likes of the International Olympic Committee, FIFA and the World Anti-Doping Agency.

We aim to enhance understanding of practices that support active lifestyles, health and well-being, and improve the sporting performance and coaching practices of both individuals and groups.

Our world-class research staff work in cutting edge facilities and focus on two key themes - exercise, health and human performance (EHHP); and sport, pedagogy and practice (SPP).

EHHP centres on the role and implementation of exercise testing for disease risk, the effectiveness of lifestyle interventions involving physical activity, and responses to exercise and sport.

SPP aims to develop innovative research that explores the complex world of applied coaching practice and the challenging nature of personal experiences within sport and exercise.

Sport, health and exercise science forms part of the University's School of Life Sciences which has a number of interdisciplinary research themes including 'exercise, health and sports psychology'.

Research here focuses on elite sports performance, exercise epidemiology and meta-analysis, and clinical exercise interventions.



Postgraduate Taught

Course	Award / Level	Study Mode	Duration	IELTS*
MSc Cancer Rehabilitation	MSc/PG Dip PG Cert	FT/PT	1 year FT / 18 months - 30 months PT	6.5 /6.0
MSc Cardiovascular Rehabilitation	MSc/PG Dip PG Cert	FT/PT	1 year FT / 18 months - 30 months PT	6.5 /6.0
MSc Clinical Exercise Physiology	MSc/PG Dip PG Cert	FT/PT	1 year FT / 18 months - 30 months PT	6.5 /6.0

Most postgraduate taught programmes start in September. Some courses also have January and June start dates - please contact us at global@hull.ac.uk for specific details.

Postgraduate Research

Subject Area	Award / Level	Study Mode	Duration	IELTS*
Sport, Health and Exercise Science	MSc by Research	FT / PT	1 Year FT / 2 Years PT	6.0/5.5
Sport, Health and Exercise Science	PhD	FT / PT	4 Years FT / 7 Years PT	6.0/5.5

Most postgraduate research degrees can start in September, January and June. Please contact us at international@hull.ac.uk.

*These are academic IELTS requirements and indicate 'overall/no less than in each skill' level. See www.hull.ac.uk for other acceptable English language qualifications. If you need to improve your English language skills to meet these entry requirements, we offer preparation courses - please see www.hull.ac.uk/efl for further details.

Entry requirements

To study at the University, you need to meet our academic entry requirements. To find out what the typical requirements are for students from your country, please visit our website - www.hull.ac.uk/international - or email us at: global@hull.ac.uk.

English language

Before you can study a degree programme at Hull, you must be able to demonstrate your knowledge of the English language to an acceptable level.

More information can be found at www.hull.ac.uk/englishlanguagerequirements.

Improving your English

If you need to improve your English, our School of Languages, Linguistics and Cultures can help in a variety of ways.

For more information, please visit www.hull.ac.uk/efl or email languages@hull.ac.uk

English language courses

There are two ways to apply for a place on one of our English language courses.

1. You can apply directly through a University of Hull representative in your country. For a full list, please see: www.hull.ac.uk/country
2. You can download and print the Pre-sessional English Language Application form available on this page: www.hull.ac.uk/apply/presessional

Completed applications can be sent via email to eflapplications@hull.ac.uk



How to apply

There are two ways to apply for one of our postgraduate programmes.

1. You can apply through a University of Hull representative in your country. For a full list, please visit our website: www.hull.ac.uk/country
2. You can make an application online. To find out more, please visit www.hull.ac.uk/admissions

The only exceptions are:

- MA Social Work - apply via UCAS at www.ucas.com
- PGCE - apply via UCAS Teacher Training (UTT) at www.ucas.com
- Hull York Medical School - apply via HYMS at www.hyms.ac.uk

Please visit www.hull.ac.uk/admissions for further details.

If you have any questions about the application process, please email global@hull.ac.uk or call +44 (0)1482 462190.

Our campus

1. Brynmor Jones Library
2. Venn Building - Reception
3. Student Central
4. Sports and Fitness Centre
5. Business School
6. Enterprise Centre
7. Allam Medical Building
8. Middleton Hall
9. The Courtyard
10. The Graduate School
11. International Office



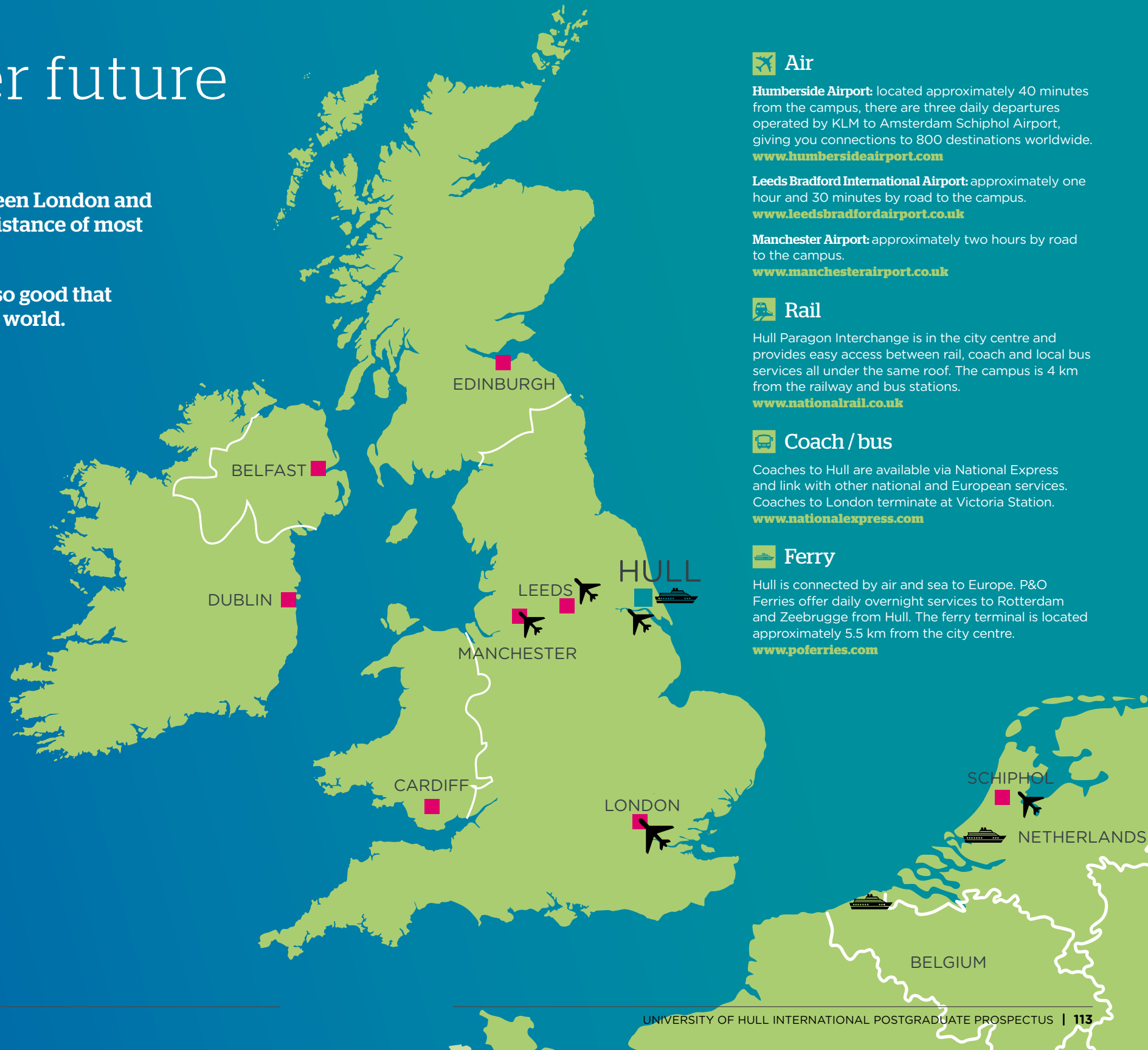
Your brighter future starts here

Our location - roughly halfway between London and Edinburgh - puts us within striking distance of most parts of the UK.

Hull's road, rail, air and sea links are so good that students come to us from all over the world.

Welcome and free pick-up service

The University provides a free transport service to all new international students who choose to arrive during our preferred arrivals period at Manchester Airport. We will contact you approximately two to three months before the start of your course to help you prepare for your arrival. For further information about the free transport service, please email inductionandtransition@hull.ac.uk. Once you arrive, we provide a free welcome and induction programme to help you settle into your new environment.



Air

Humbly Grove Airport: located approximately 40 minutes from the campus, there are three daily departures operated by KLM to Amsterdam Schiphol Airport, giving you connections to 800 destinations worldwide. www.humblygroveairport.com

Leeds Bradford International Airport: approximately one hour and 30 minutes by road to the campus. www.leedsbradfordairport.co.uk

Manchester Airport: approximately two hours by road to the campus. www.manchesterairport.co.uk

Rail

Hull Paragon Interchange is in the city centre and provides easy access between rail, coach and local bus services all under the same roof. The campus is 4 km from the railway and bus stations. www.nationalrail.co.uk

Coach / bus

Coaches to Hull are available via National Express and link with other national and European services. Coaches to London terminate at Victoria Station. www.nationalexpress.com

Ferry

Hull is connected by air and sea to Europe. P&O Ferries offer daily overnight services to Rotterdam and Zeebrugge from Hull. The ferry terminal is located approximately 5.5 km from the city centre. www.poferries.com

Useful contacts

International Office

We welcome enquiries on

+44 (0)1482 462190

global@hull.ac.uk
(Postgraduate taught degrees)

international@hull.ac.uk
(Postgraduate research degrees)

www.hull.ac.uk/international

Accommodation

For further information, please contact

+44 (0)1482 466042
rooms@hull.ac.uk
www.hull.ac.uk/accomm

Student finance

For a full list of fees and funding advice, please contact

+44 (0)1482 466538
hefunding@hull.ac.uk
www.hull.ac.uk/money

Immigration

For further information, please contact

+44 (0)1482 462020
immigration@hull.ac.uk
www.hull.ac.uk/immigrationadvice

The (not so) small print...

The information contained in this prospectus is for general information purposes only. The information is provided by the University of Hull, and while we do everything possible to keep the information up to date and correct, we make no representations or warranties of any kind, expressed or implied, about the completeness, accuracy, reliability, suitability or availability with respect to the prospectus or the information, products, services or related graphics contained in the prospectus for any purpose. Any reliance you place on such information is therefore strictly at your own risk.

Please visit our website and the referenced course pages for the latest programme information.

Without limiting the effect of the previous paragraph, we reserve the right to introduce changes to the information given in our prospectus, including the addition, withdrawal, relocation or restructuring of courses.

In no event will we be liable for any loss or damage including, without limitation, indirect or consequential loss or damage, or any loss or damage whatsoever arising from loss of data or profits arising out of or in connection with the use of this prospectus.

No models were used in the production of this prospectus. The people whose pictures you see on these pages are all our students, and we are proud of them.

If you have any comments on the information presented in this prospectus, please write to Marketing and Communications, University of Hull, Cottingham Road, Hull, HU6 7RX, UK

VIRTUAL CAMPUS

As an international student, we know it's not always possible to visit in person - so get a real feel for our campus and the city of Hull on our fantastic new virtual tour.

Enjoy 360 degree views of some of our amazing facilities - and look out for the special hotspots where you can watch videos giving you extra insights.

You can also take a look around the city of Hull, and learn more about its history and all of the exciting things to do here.

Explore the virtual tour freely - or let us take you on a guided tour of some of the highlights of the campus and the city.

www.hull.ac.uk/virtualtour



University of Hull
Cottingham Road
Hull, HU6 7RX
United Kingdom

hull.ac.uk
+44 (0)1482 462190
global@hull.ac.uk



[uniofhull](#)



[UniOfHull](#)



[UniversityOfHull](#)



[universityofhull](#)

